

GA102/NP, GeForce SKU P-BOARD
450W/600W, 384bit, GDDR6x x16 24GB
DP + DP + DP + HDMI/DP

TABLE OF CONTENTS

Page Description

1	Table of Contents
2	BLOCK DIAGRAM
3	PCI EXPRESS
4	MEMORY: GPU PARTITION A/B
5	MEMORY: FBA PARTITION[31:0]
6	MEMORY: FBA PARTITION[63:32]
7	MEMORY: FBB PARTITION[31:0]
8	MEMORY: FBB PARTITION[63:31]
9	MEMORY: GPU PARTITION C/D
10	MEMORY: FBC PARTITION[31:0]
11	MEMORY: FBC PARTITION[63:32]
12	MEMORY: FBD PARTITION[31:0]
13	MEMORY: FBD PARTITION[63:32]
14	MEMORY: GPU PARTITION E/F
15	MEMORY: FBE PARTITION[31:0]
16	MEMORY: FBE PARTITION[63:32]
17	MEMORY: FBF PARTITION[31:0]
18	MEMORY: FBF PARTITION[63:32]
19	MEMORY DECOUPLING
20	GPU: GND, NC
21	GPU: GPU POWER
22	GPU: NVVDD DECOUPLING (1/2)
23	GPU: NVVDD DECOUPLING (2/2)
24	GPU: FBVDD DECOUPLING
25	GPU: NVHS x16

Page Description

26	GPU: GPIO, THERMAL, JTAG
27	IFPA UNUSED, IFPB UNUSED
28	IFPC HDMI/DP
29	IFPD DP
30	IFPE DP
31	IFPF DP
32	MISC. ROM, STRAPS
33	MISC. XTAL, PLL
34	PS: 5V
35	PS: PEX_DVDD, GA1V8_NP1V2
36	PS: NP1V8(NP ONLY), 1V8_MISC
37	PS: FBVDDQ OVR4
38	PS: FBVDD PH1 (PWM4) and PH2 (PWM2)
39	PS: FBVDD PH3 (PWM3) and PH4 (PWM1)
40	PS: FBVDD OUTPUT CAP NEAR VR
41	PS: FBVDD OUTPUT CAP NEAR MEMORY
42	PS: NVVDD Controller
43	PS: NVVDD Controller Sense
44	PS: NVVDD PH1A, PH1B
45	PS: NVVDD PH1C, PH2A
46	PS: NVVDD PH2B, PH2C
47	PS: NVVDD PH3A, PH3B
48	PS: NVVDD PH3C, PH4A
49	PS: NVVDD PH4B, PH4C
50	PS: NVVDD PH5A, PH5B

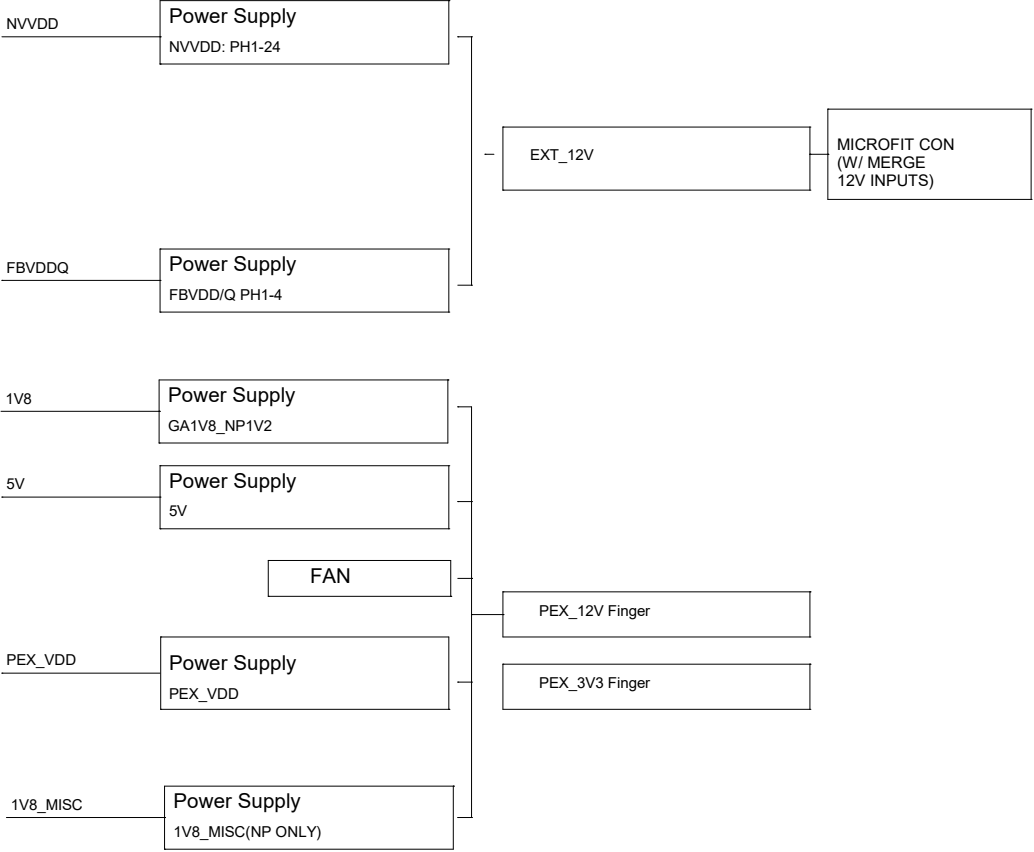
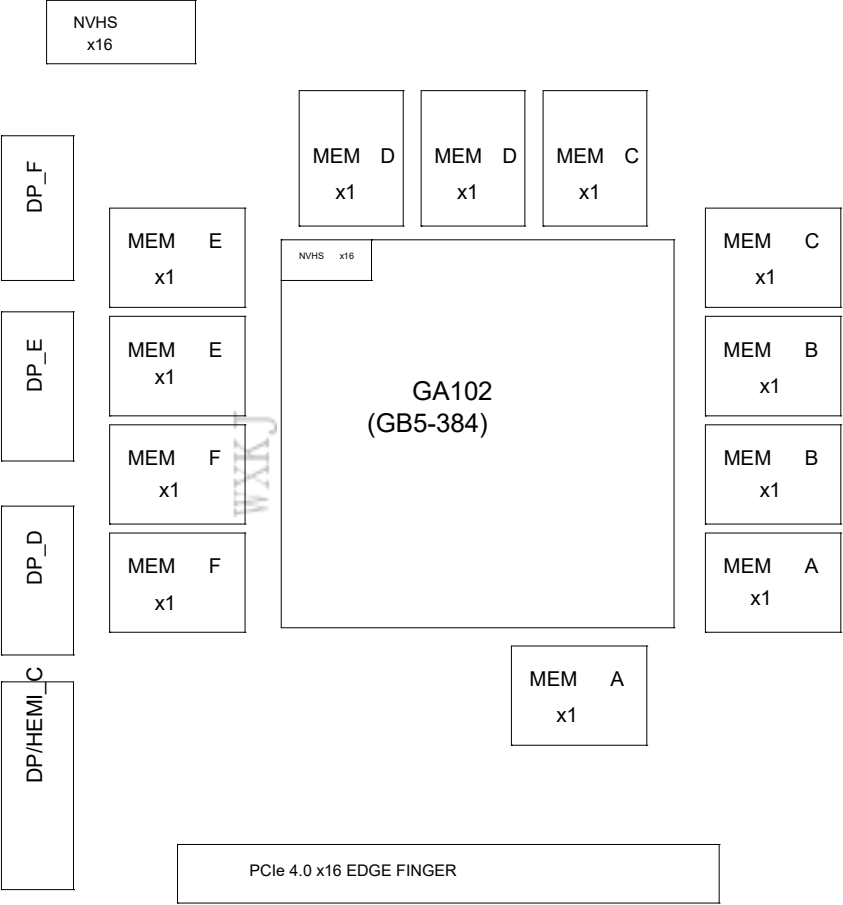
Page Description

51	PS: NVVDD PH5C, PH6A
52	PS: NVVDD PH6B, PH6C
53	PS: NVVDD PH7A, PH7B
54	PS: NVVDD PH7C, PH8A
55	PS: NVVDD PH8B, PH8C
56	PS: INPUT CAP
57	PS: NVVDD OUTPUT CAP
58	BLANK
59	BLANK
60	BLANK
61	BLANK
62	PS: INPUTS, FILTERING, MONITORING
63	PS: PREFILTER
64	BLANK
65	SEQ: 5V, GA1V8_NP1V2 EN, 3V3_SEQ, 3V3_PROT
66	SEQ: NV, PEX, FB EN
67	SEQ: MISC, PEX3V3 MONITOR
68	FAN & NORTH LOGO LED
69	X/V LEDs
70	MECH & VR THERMAL PROTECTION
71	PCIe TERM
72	INPUT PRESENT & HOT UNPLUG

ALL NVIDIA DESIGN SPECIFICATIONS, REFERENCE SPECIFICATIONS, REFERENCE BOARDS, FILES, DRAWINGS, DIAGNOSTICS, LISTS AND OTHER DOCUMENTS OR INFORMATION (TOGETHER AND SEPARATELY, "MATERIALS") ARE BEING PROVIDED "AS IS". THE MATERIALS DO NOT CONTAIN KNOWN AND UNKNOWN VIOLATIONS OR DEVIATIONS OF INDUSTRY STANDARDS AND SPECIFICATIONS. NVIDIA MAKES NO WARRANTIES, EXPRESSED, IMPLIED, STATUTORY OR OTHERWISE WITH RESPECT TO THE MATERIALS OR OTHERWISE, AND EXPRESSLY DISCLAIMS ALL IMPLIED WARRANTIES INCLUDING, WITHOUT LIMITATION, THE WARRANTIES OF DESIGN, OF NONINFRINGEMENT, MERCHANTABILITY OR FITNESS FOR A PARTICULAR PURPOSE, OR ARISING FROM A COURSE OF DEALING, TRADE USAGE, TRADE PRACTICE, OR INDUSTRY STANDARDS.

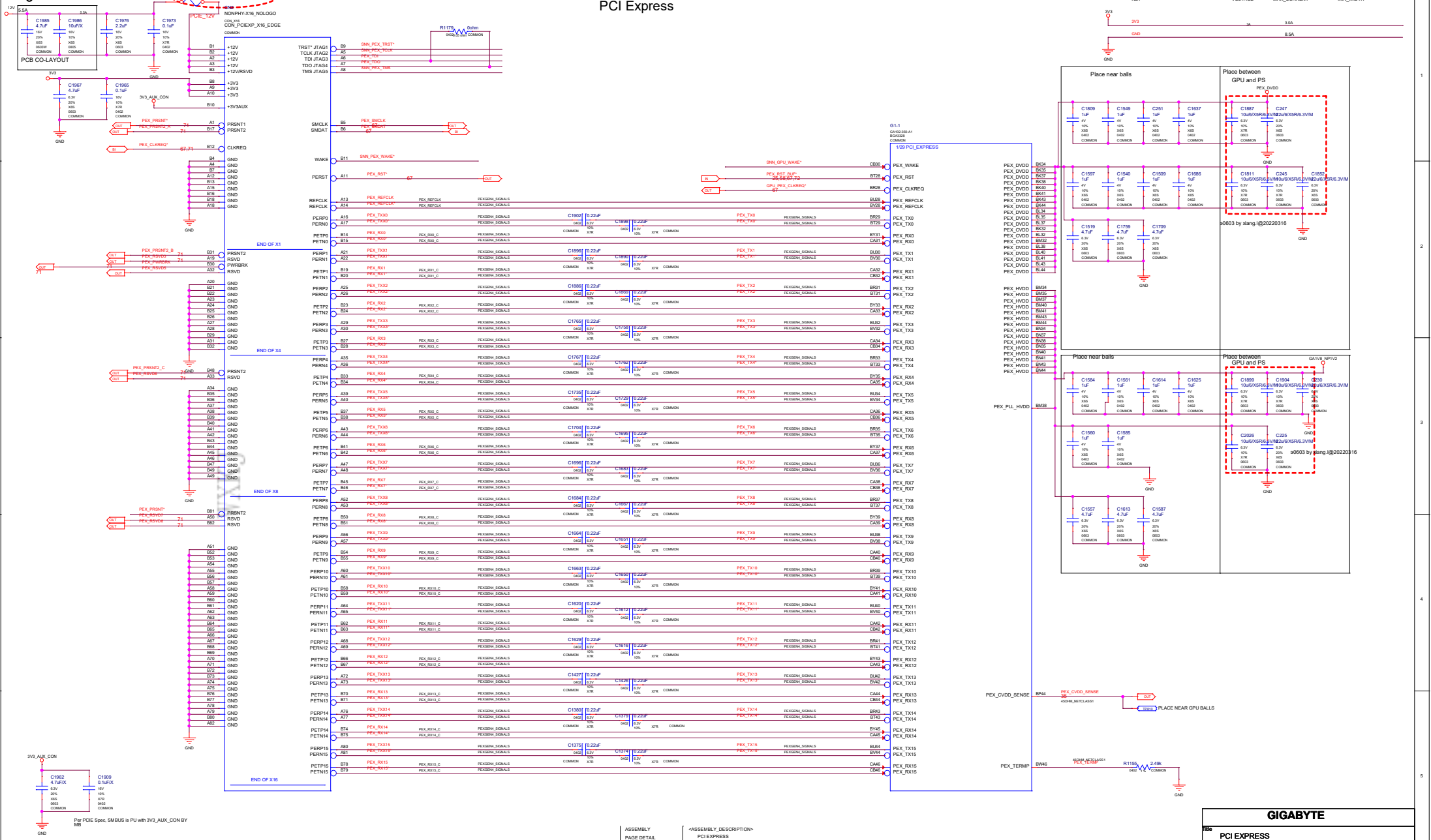
ASSEMBLY PAGE DETAIL <ASSEMBLY DESCRIPTION> Table of Contents

GIGABYTE			
Title Table of Contents			
Size	Document Number		Rev
Custom	GV-N4090GAMING-24GD		1.0
Date:	Wednesday, October 12, 2022	Sheet	1 of 72



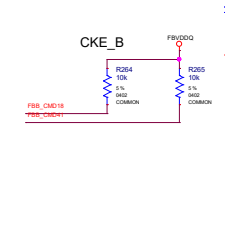
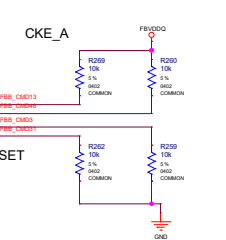
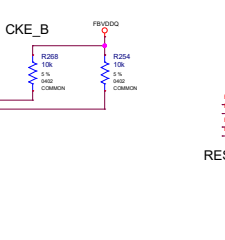
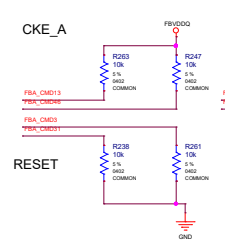
ALL NVIDIA DESIGN SPECIFICATIONS, REFERENCE SPECIFICATIONS, REFERENCE BOARDS, FILES, DRAWINGS, DIAGNOSTICS, LISTS AND OTHER DOCUMENTS OR INFORMATION (TOGETHER AND SEPARATELY, "MATERIALS") ARE BEING PROVIDED "AS IS". THE MATERIALS CONTAIN KNOWN AND UNKNOWN VIOLATIONS OR DEVIATIONS OF INDUSTRY STANDARDS AND SPECIFICATIONS. NVIDIA MAKES NO WARRANTIES, EXPRESSED, IMPLIED, STATUTORY OR OTHERWISE WITH RESPECT TO THE MATERIALS OR OTHERWISE, AND EXPRESSLY DISCLAIMS ALL WARRANTIES INCLUDING, WITHOUT LIMITATION, THE WARRANTIES OF DESIGN, OF NONINFRINGEMENT, MERCHANTABILITY OR FITNESS FOR A PARTICULAR PURPOSE, OR ARISING FROM A COURSE OF DEALING, TRADE USAGE, TRADE PRACTICE, OR INDUSTRY STANDARDS.

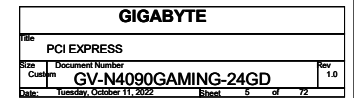
PCI Express

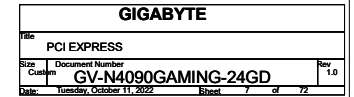


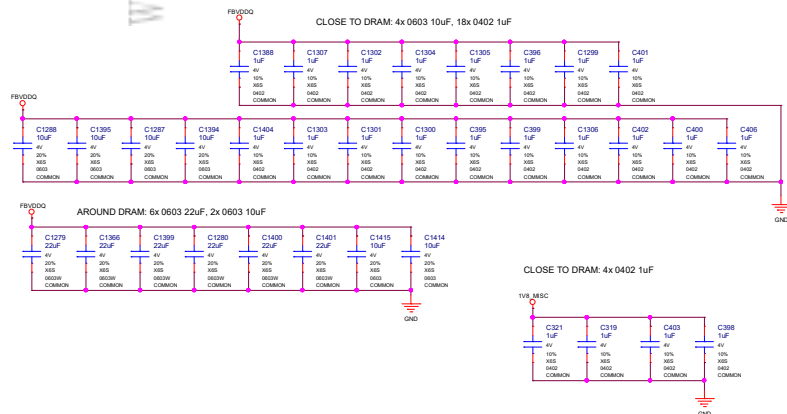
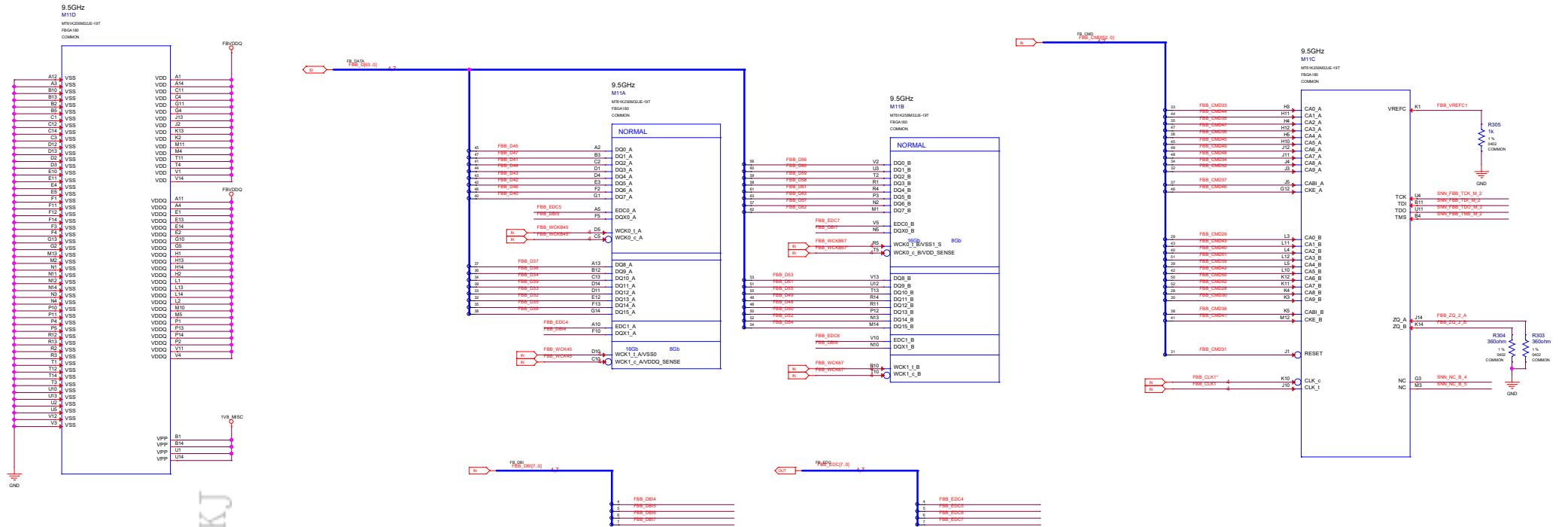
ALL NVIDIA DESIGN SPECIFICATIONS, REFERENCE SPECIFICATIONS, REFERENCE BOARDS, FILES, DRAWINGS, DIAGNOSTICS, LISTS AND OTHER DOCUMENTS OR INFORMATION (TOGETHER AND SEPARATELY, "MATERIALS") ARE BEING PROVIDED AS IS. THE MATERIALS MAY CONTAIN KNOWN AND UNKNOWN VIOLATIONS OR DEVIATIONS OF INDUSTRY STANDARDS AND SPECIFICATIONS. NVIDIA MAKES NO WARRANTIES, EXPRESSED, IMPLIED, STATUTORY OR OTHERWISE WITH RESPECT TO THE MATERIALS OR OTHERWISE, AND EXPRESSLY DISCLAIMS ALL WARRANTIES INCLUDING, WITHOUT LIMITATION, THE WARRANTIES OF DESIGN, OF NONINFRINGEMENT, MERCHANTABILITY OR FITNESS FOR A PARTICULAR PURPOSE, OR ARISING FROM A COURSE OF DEALING, TRADE USAGE, TRADE PRACTICE OR INDUSTRY CUSTOM.

		GIGABYTE	
Title		PCI EXPRESS	
Size	Document Number		Rev
Custom	GV-N4090GAMING-24GD		1.0
Date:	Tuesday, October 11, 2022	Sheet	3 of 75





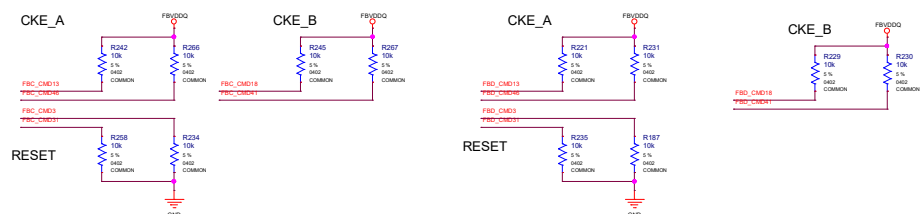


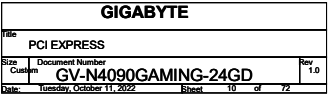


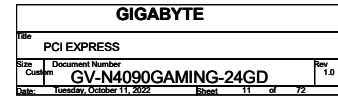
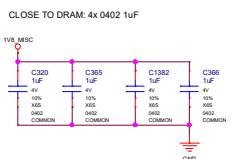
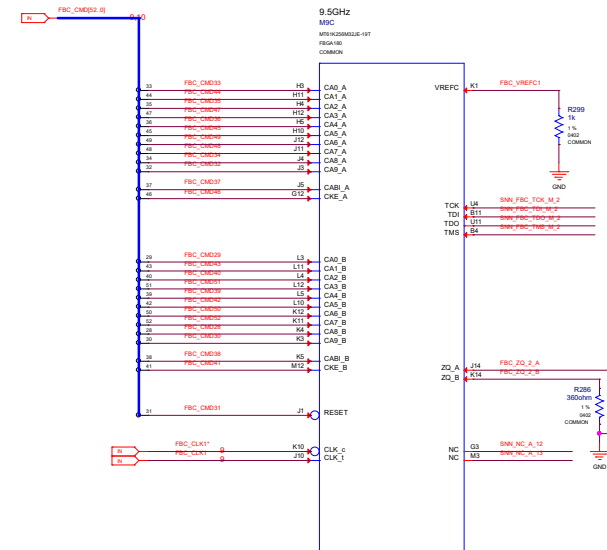
ASSEMBLY	<ASSEMBLY_DESCRIPTION>
PAGE DETAIL	MEMORY: FBB PARTITION[63:31]

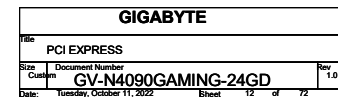
GIGABYTE			
Title PCI EXPRESS			
Size	Document Number		Rev
Custom	GV-N4090GAMING-24GD		1.0
Date:	Tuesday, October 11, 2022	Sheet	8 of 72

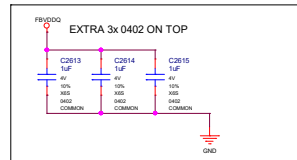
ALL UNDER DESIGN SPECIFICATIONS, REFERENCE SPECIFICATIONS, STANDARDS, CODES, RULES, DRAWINGS, DIAGNOSTIC LISTS AND OTHER DOCUMENTS OR INFORMATION (TOGETHER AND SEPARATELY, "MATERIALS") ARE BEING PROVIDED AS IS. THE MATERIALS MAY CONTAIN KNOWN AND UNKNOWN VIOLATIONS OR DEVIATIONS OF INDUSTRY STANDARDS AND SPECIFICATIONS. VIOGATES MAKES NO WARRANTIES, EXPRESSED, IMPLIED, STATUTORY OR OTHERWISE WITH RESPECT TO THE MATERIALS OR OTHERWISE, AND EXPRESSLY DISCLAIMS ALL SUCH WARRANTIES INCLUDING, WITHOUT LIMITATION, THE WARRANTIES OF DESIGN, OF NON-INFRINGEMENT, MERCHANTABILITY OR FITNESS FOR A PARTICULAR PURPOSE, OR ARISING FROM A COURSE OF DEALING, TRADE USAGE, TRADE PRACTICE, OR INDUSTRY STANDARDS.

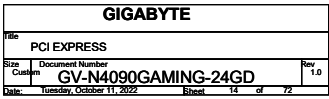


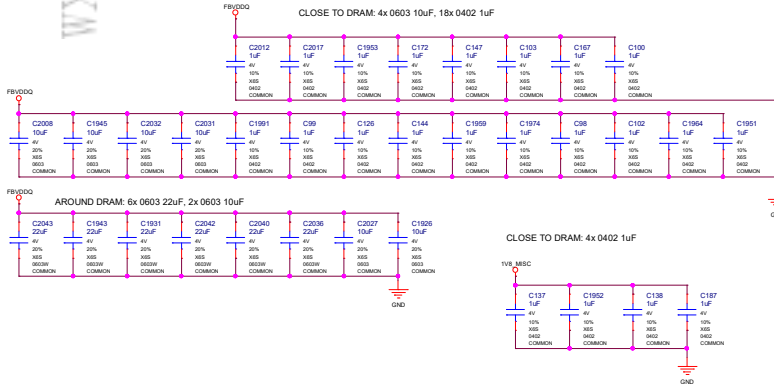




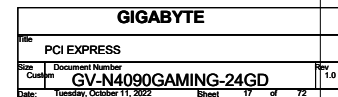


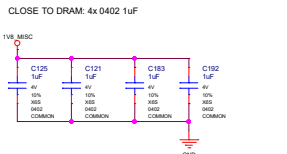






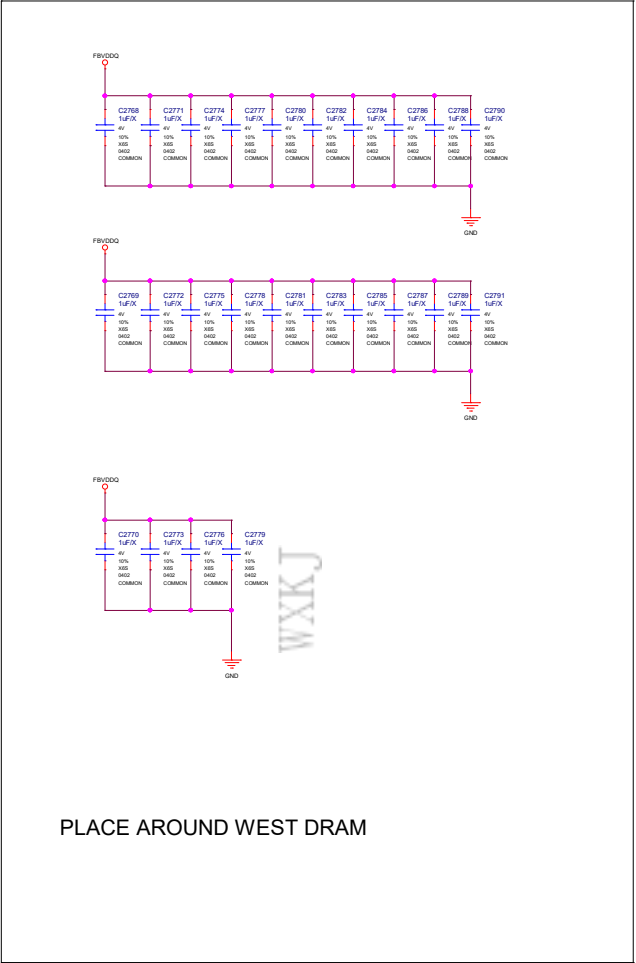
GIGABYTE			
Title PCI EXPRESS			
Size Custom	Document Number GV-N4090GAMING-24GD		Rev 1.0
Date:	Tuesday, October 11, 2022	Sheet	18 of 72



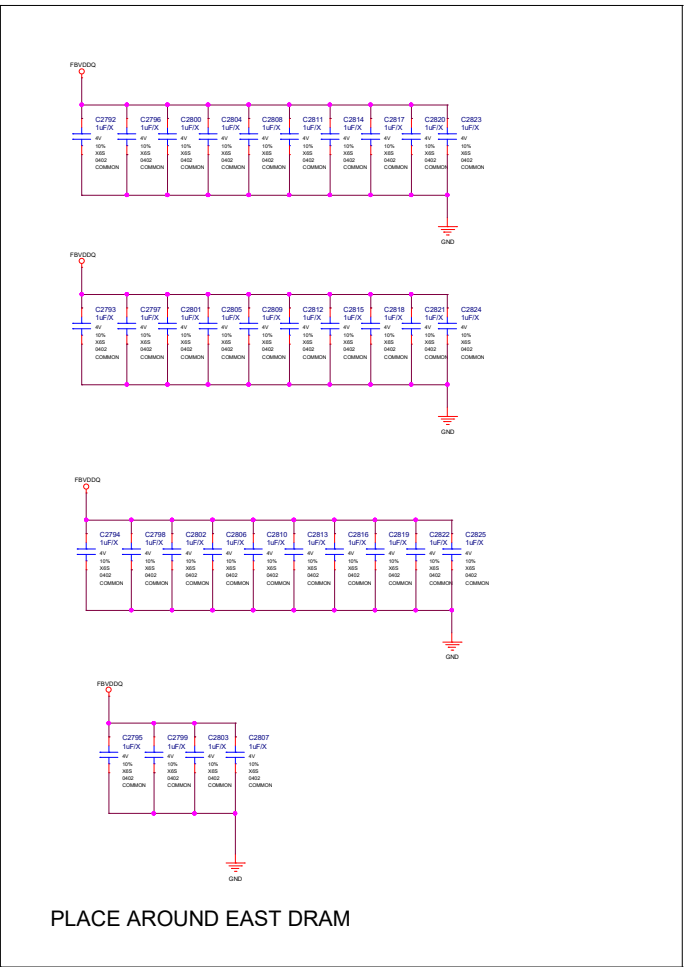


GIGABYTE			
Title: PCI EXPRESS			
Size: 1	Document Number: GV-N4090GAMING-24GD		Rev: 1.0
Date: Tuesday, October 11, 2022	Sheet: 18	of 72	

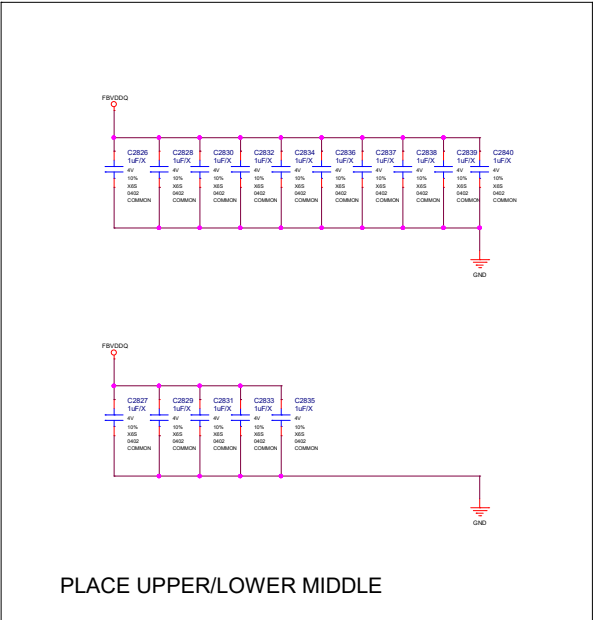
PER SI REQUIREMENT, RESERVE MORE 0402 1UF AROUND DRAM



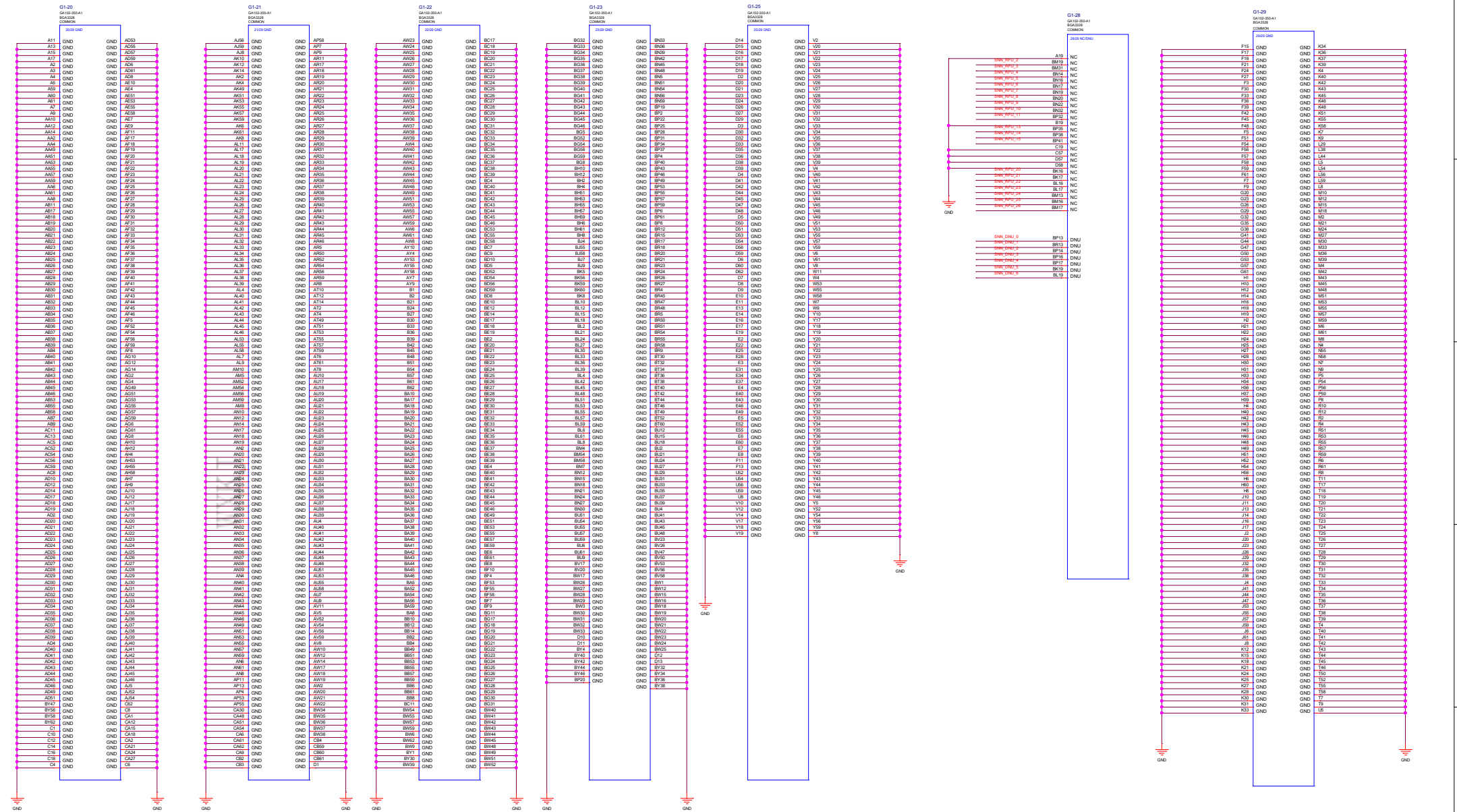
PLACE AROUND WEST DRAM

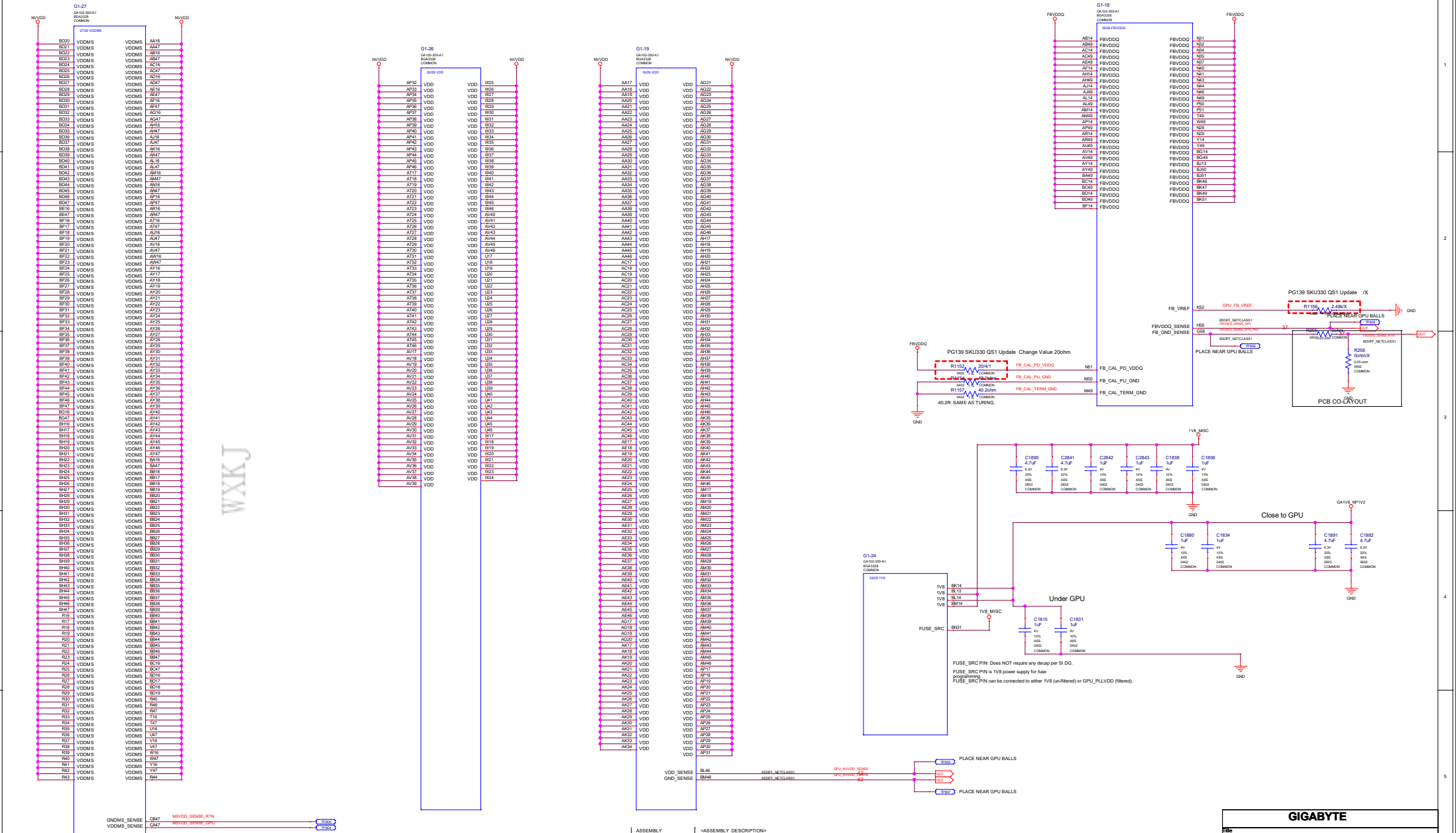


PLACE AROUND EAST DRAM



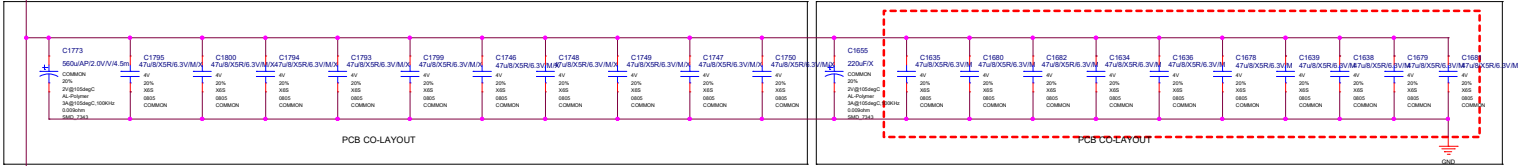
PLACE UPPER/LOWER MIDDLE



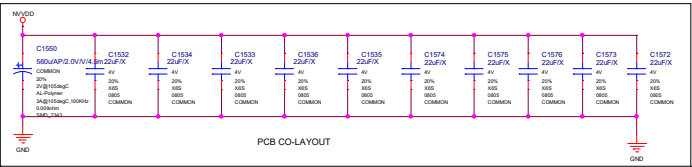


NVVDD UNDER GPU

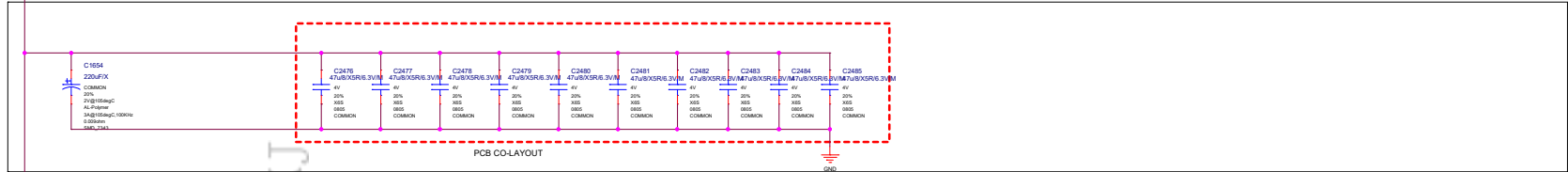
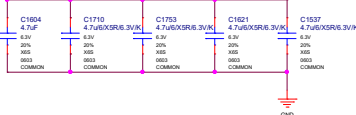
4x SMD7343 330uF (EACH CO-LAYOUT WITH 10x 0805 22uF)



1x 0805 22uF

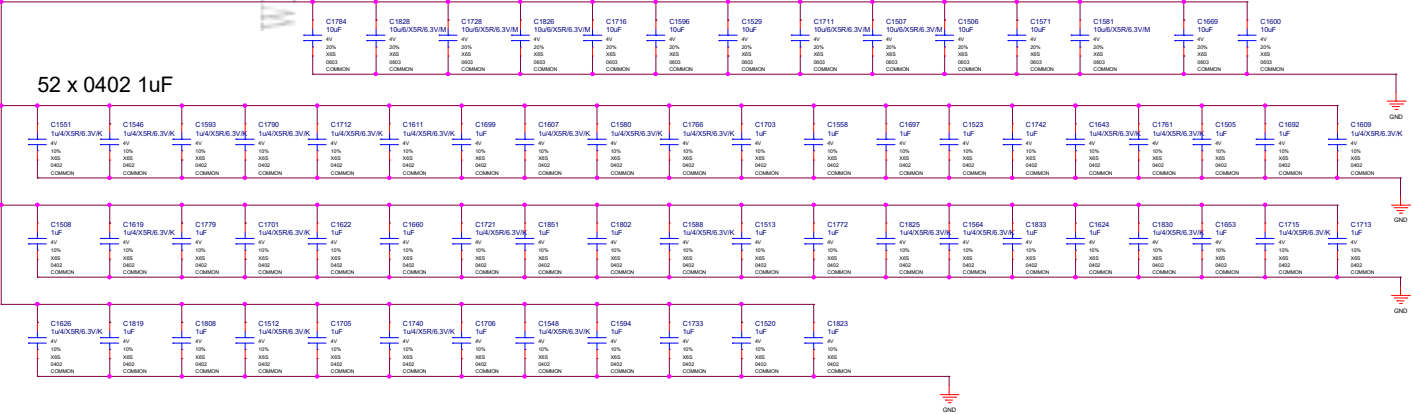


5x 0603 4.7uF



14x 0603 10uF

52 x 0402 1uF



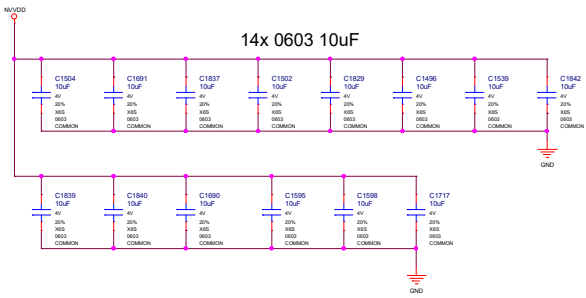
ALL NVIDIA DESIGN SPECIFICATIONS, REFERENCE SPECIFICATIONS, REFERENCE BOARDS, FILES, DRAWINGS, DIAGNOSTICS, LISTS AND OTHER DOCUMENTS OR INFORMATION (TOGETHER AND SEPARATELY, "MATERIALS") ARE BEING PROVIDED "AS IS". THE MATERIALS CONTAIN KNOWN AND UNKNOWN VIOLATIONS OR DEVIATIONS OF INDUSTRY STANDARDS AND SPECIFICATIONS. NVIDIA MAKES NO WARRANTIES, EXPRESSED, IMPLIED, STATUTORY OR OTHERWISE WITH RESPECT TO THE MATERIALS OR OTHERWISE, AND EXPRESSLY DISCLAIMS ALL IMPLIED WARRANTIES INCLUDING, WITHOUT LIMITATION, THE WARRANTIES OF DESIGN, OF NON-INFRINGEMENT, MERCHANTABILITY OR FITNESS FOR A PARTICULAR PURPOSE, OR ARISING FROM A COURSE OF DEALING, TRADE USAGE, TRADE PRACTICE, OR INDUSTRY STANDARDS.

ASSEMBLY DESCRIPTION:
GPU: NVVDD DECOUPLING(1/2)

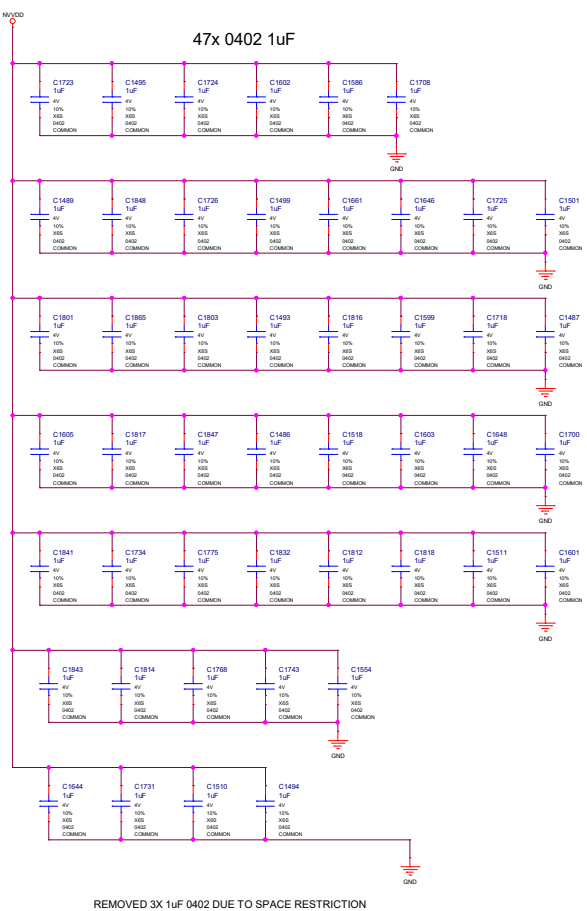
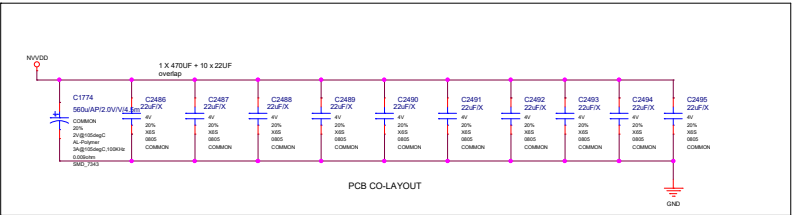
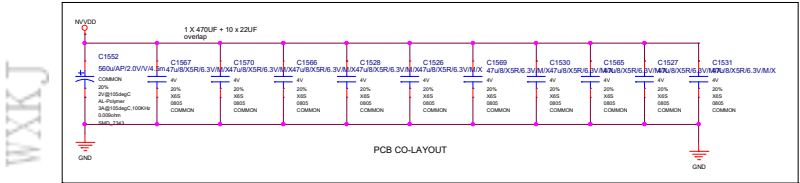
GIGABYTE			
PCI EXPRESS			
Size	Document Number	Rev	
Common	GV-N4090GAMING-24GD	1.0	
Date:	Tuesday, October 11, 2022	Sheet	22 of 72

UNDER GPU

NVVDD



2x SMD7343 330uF (EACH CO-LAYOUT WITH 10x 22uF 0805)

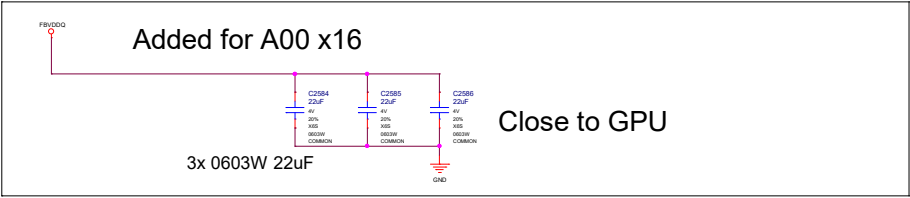
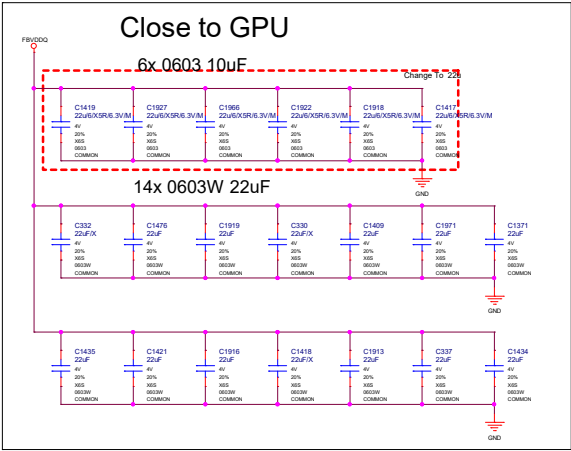
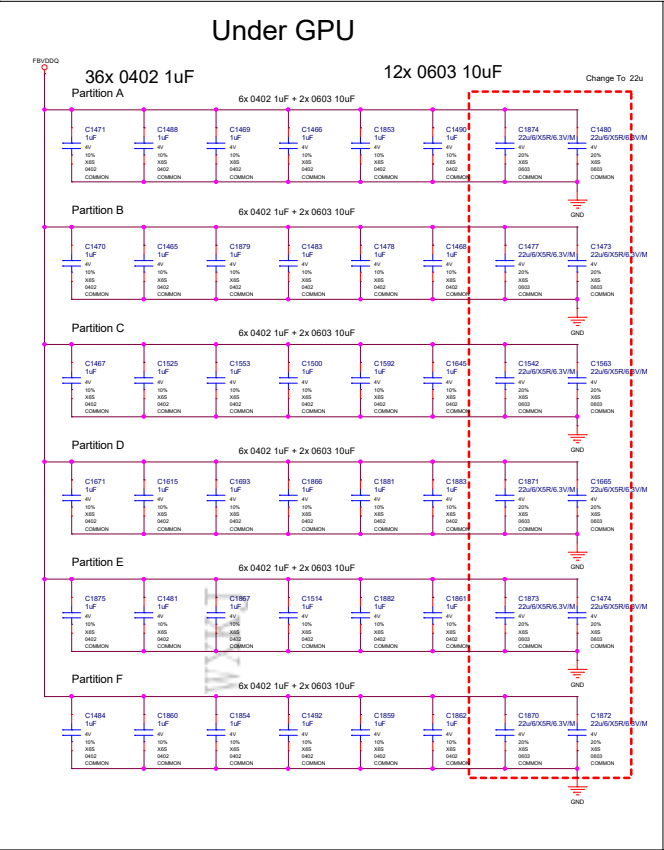


REMOVED 3X 1uF 0402 DUE TO SPACE RESTRICTION

ALL NVIDIA DESIGN SPECIFICATIONS, REFERENCE BOARDS, FILES, DRAWINGS, DIAGNOSTICS, LISTS AND OTHER DOCUMENTS OR INFORMATION (TOGETHER AND SEPARATELY, "MATERIALS") ARE BEING PROVIDED "AS IS". THE MATERIALS CONTAIN KNOWN AND UNKNOWN VIOLATIONS OR DEVIATIONS OF INDUSTRY STANDARDS AND SPECIFICATIONS. NVIDIA MAKES NO WARRANTIES, EXPRESSED, IMPLIED, STATUTORY OR OTHERWISE, WITH RESPECT TO THE MATERIALS OR OTHERWISE, AND EXPRESSLY DISCLAIMS ALL IMPLIED WARRANTIES INCLUDING, WITHOUT LIMITATION, THE WARRANTIES OF DESIGN, OF NON-INFRINGEMENT, MERCHANTABILITY OR FITNESS FOR A PARTICULAR PURPOSE, OR ARISING FROM A COURSE OF DEALING, TRADE PRACTICE, OR INDUSTRY STANDARDS.

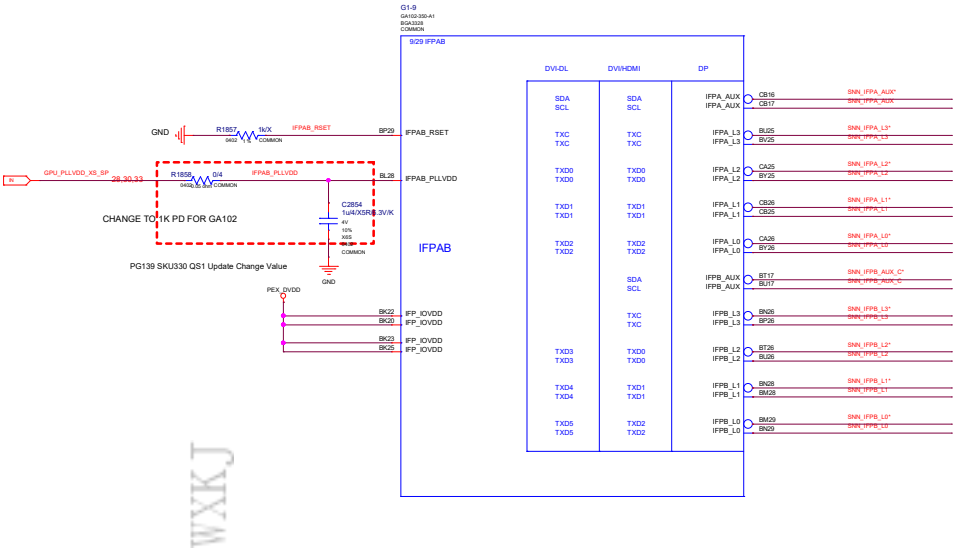
GIGABYTE			
Rev	PCI EXPRESS		
Doc Number	GV-N4090GAMING-24GD		
Customer	GV-N4090GAMING-24GD		
Date	Tuesday, October 11, 2022	Sheet	23 of 72

FBVDDQ



ALL NVIDIA DESIGN SPECIFICATIONS, REFERENCE SPECIFICATIONS, REFERENCE BOARDS, FILES, DRAWINGS, DIAGNOSTICS, LISTS AND OTHER DOCUMENTS (TOGETHER AND SEPARATELY, "MATERIALS") ARE BEING PROVIDED "AS IS." THE MATERIALS MAY CONTAIN KNOWN AND UNKNOWN VIOLATIONS OR DEVIATIONS OF INDUSTRY STANDARDS AND SPECIFICATIONS. NVIDIA MAKES NO WARRANTIES, EXPRESSED, IMPLIED, STATUTORY OR OTHERWISE WITH RESPECT TO THE MATERIALS OR OTHERWISE, AND EXPRESSLY DISCLAIMS ALL WARRANTIES INCLUDING, WITHOUT LIMITATION, THE WARRANTIES OF DESIGN, OF NON-INFRINGEMENT, MERCHANTABILITY OR FITNESS FOR A PARTICULAR PURPOSE, OR ARISING FROM A COURSE OF DEALING, TRADE USAGE, TRADE PRACTICE, OR INDUSTRY STANDARDS.



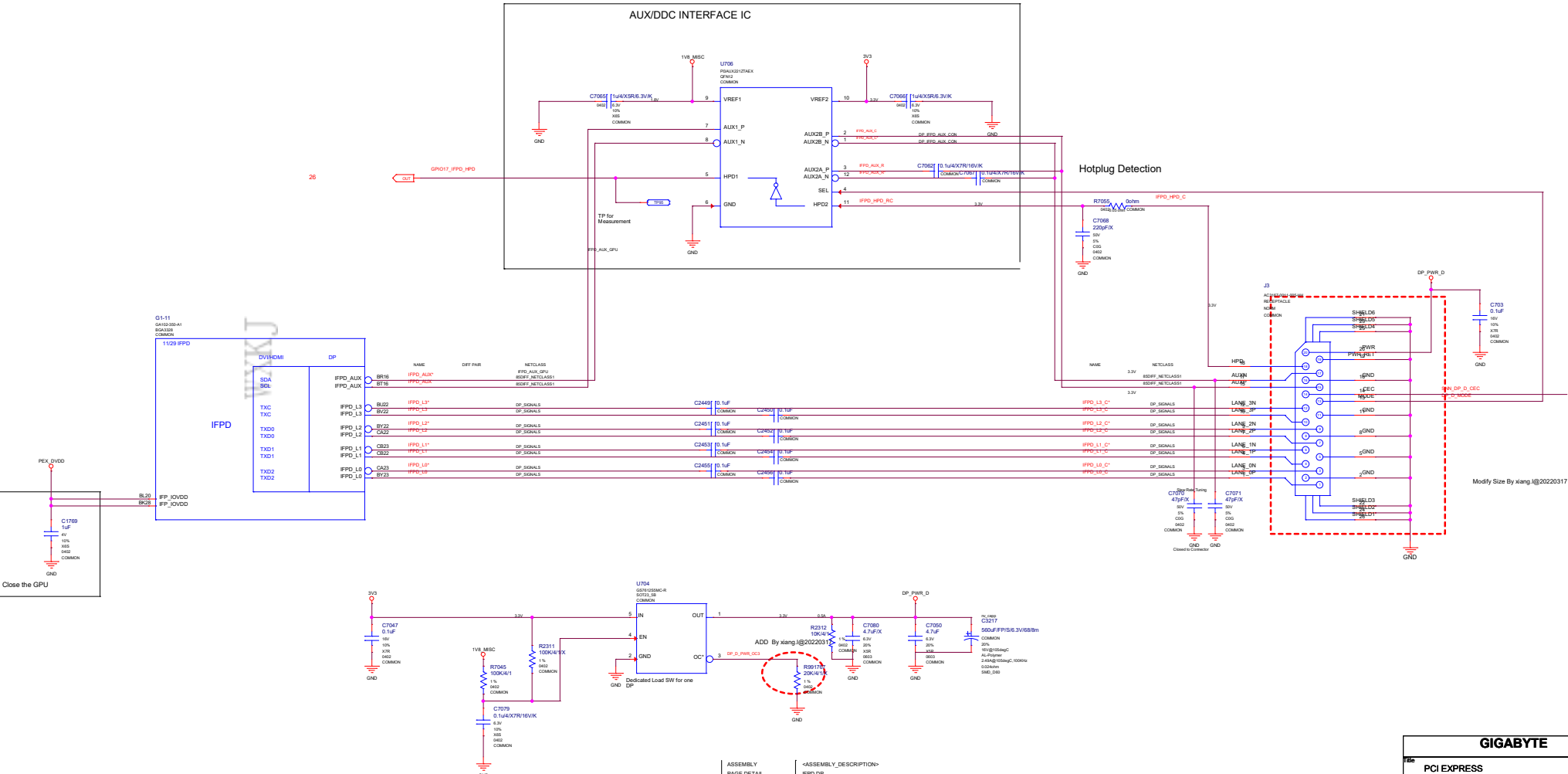


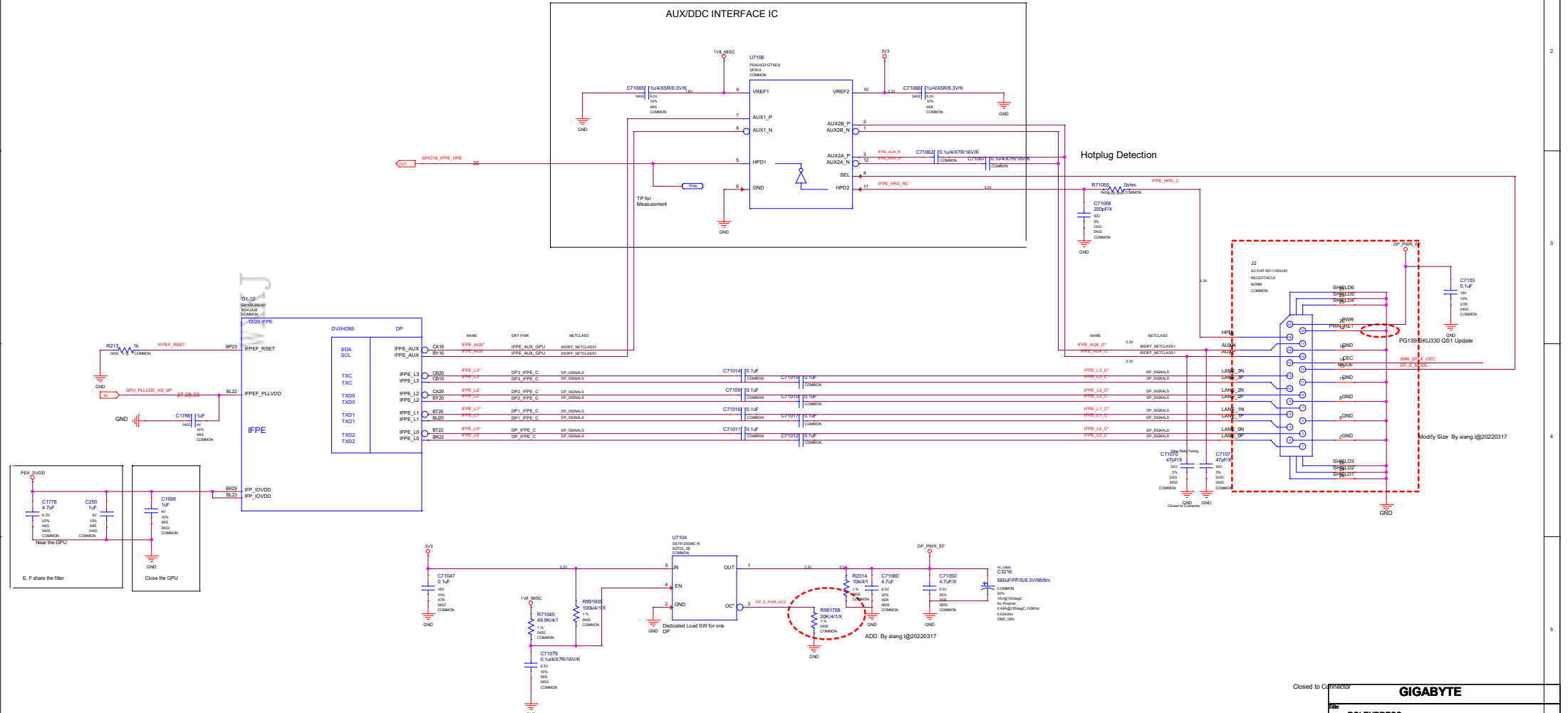
ALL NVIDIA DESIGN SPECIFICATIONS, REFERENCE SPECIFICATIONS, REFERENCE BOARDS, FILES, DRAWINGS, DIAGNOSTICS, LISTS AND OTHER DOCUMENTS (TOGETHER AND SEPARATELY, "MATERIALS") ARE BEING PROVIDED "AS IS". THE MATERIALS CONTAIN KNOWN AND UNKNOWN VIOLATIONS OR DEVIATIONS OF INDUSTRY STANDARDS AND SPECIFICATIONS. NVIDIA MAKES NO WARRANTIES, EXPRESSED, IMPLIED, STATUTORY OR OTHERWISE WITH RESPECT TO THE MATERIALS OR OTHERWISE, AND EXPRESSLY DISCLAIMS ALL IMPLIED WARRANTIES INCLUDING, WITHOUT LIMITATION, THE WARRANTIES OF DESIGN, OF NON-INFRINGEMENT, MERCHANTABILITY OR FITNESS FOR A PARTICULAR PURPOSE, OR ARISING FROM A COURSE OF DEALING, TRADE USAGE, TRADE PRACTICE, OR INDUSTRY STANDARDS.

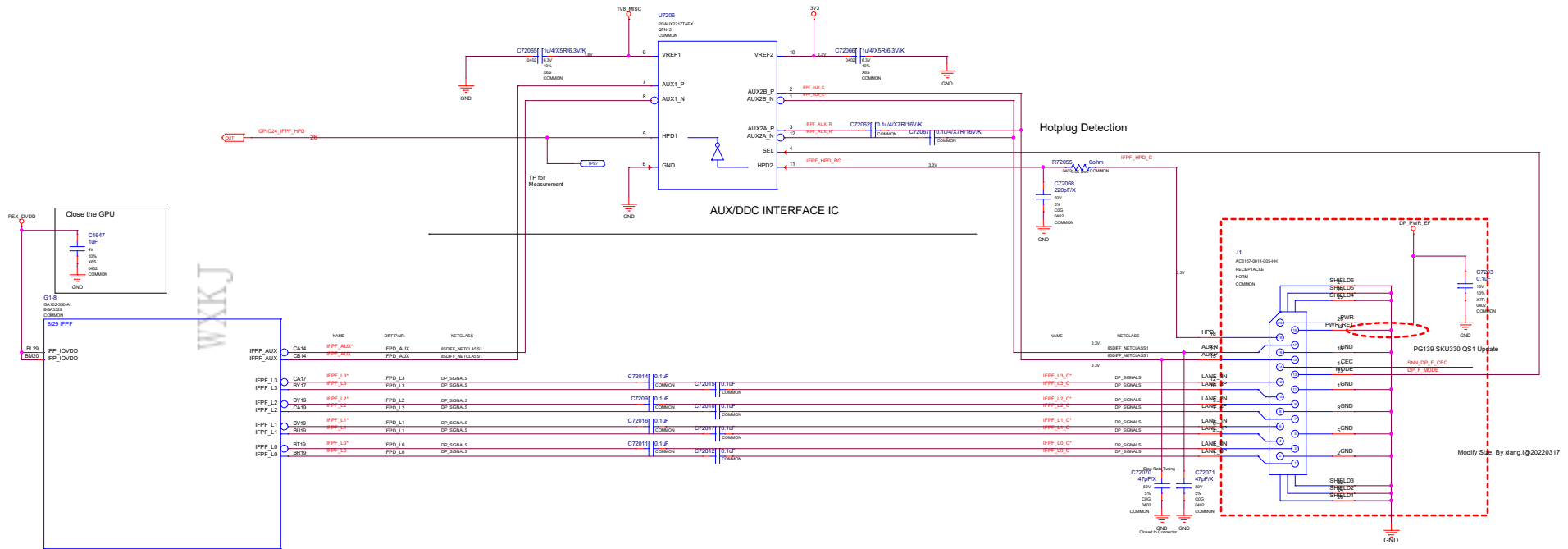
GIGABYTE			
PCI EXPRESS			
Size	Document Number		Rev
Custom	GV-N4090GAMING-24GD		1.0
Date:	Tuesday, October 11, 2022	Sheet	27 of 72



Title			
PCI EXPRESS			
Size	Document Number	Rev	
Custom	GV-N4090GAMING-24GD	1.0	
Date:	Tuesday, October 11, 2022	Sheet	28 of 72







PG139 SKU330 QS1 Update

Closed to Connector

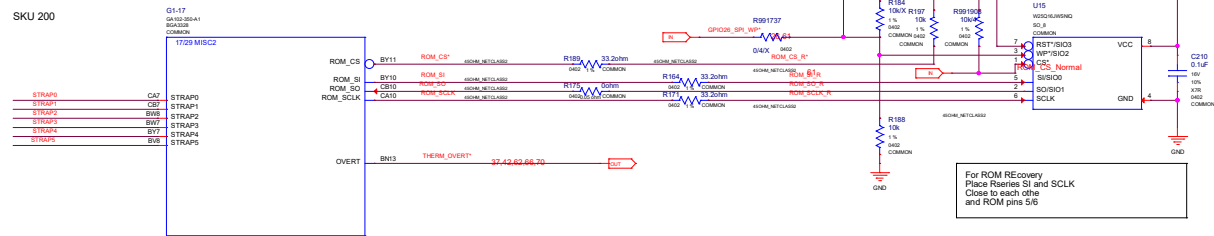
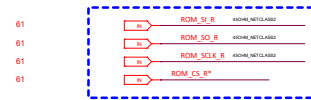
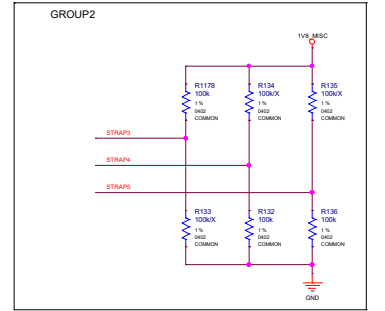
GIGABYTE			
Title PCI EXPRESS			
Size	Document Number		Rev
Custom	GV-N4090GAMING-24GD		1.0
Date:	Tuesday, October 11, 2022	Sheet	31 of 72

GROUP1

ROM_SO	ROM_SI	ROM_SCLK	SMARTFAN[2:0].FS_OVERT	1:ENABLE 0:DISABLE
L	M	L	1001	FAN0/1=33%33%, FS_OVERT ENABLE

H

SKU 200



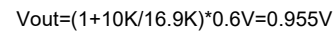
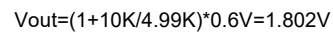
Title			
PCI EXPRESS			
Size	Custom	Document Number	Rev
		GV-N4090GAMING-24GD	1.0
Date:	Tuesday, October 11, 2022	Sheet	32 of 72



ADD By xiang.l@20220317

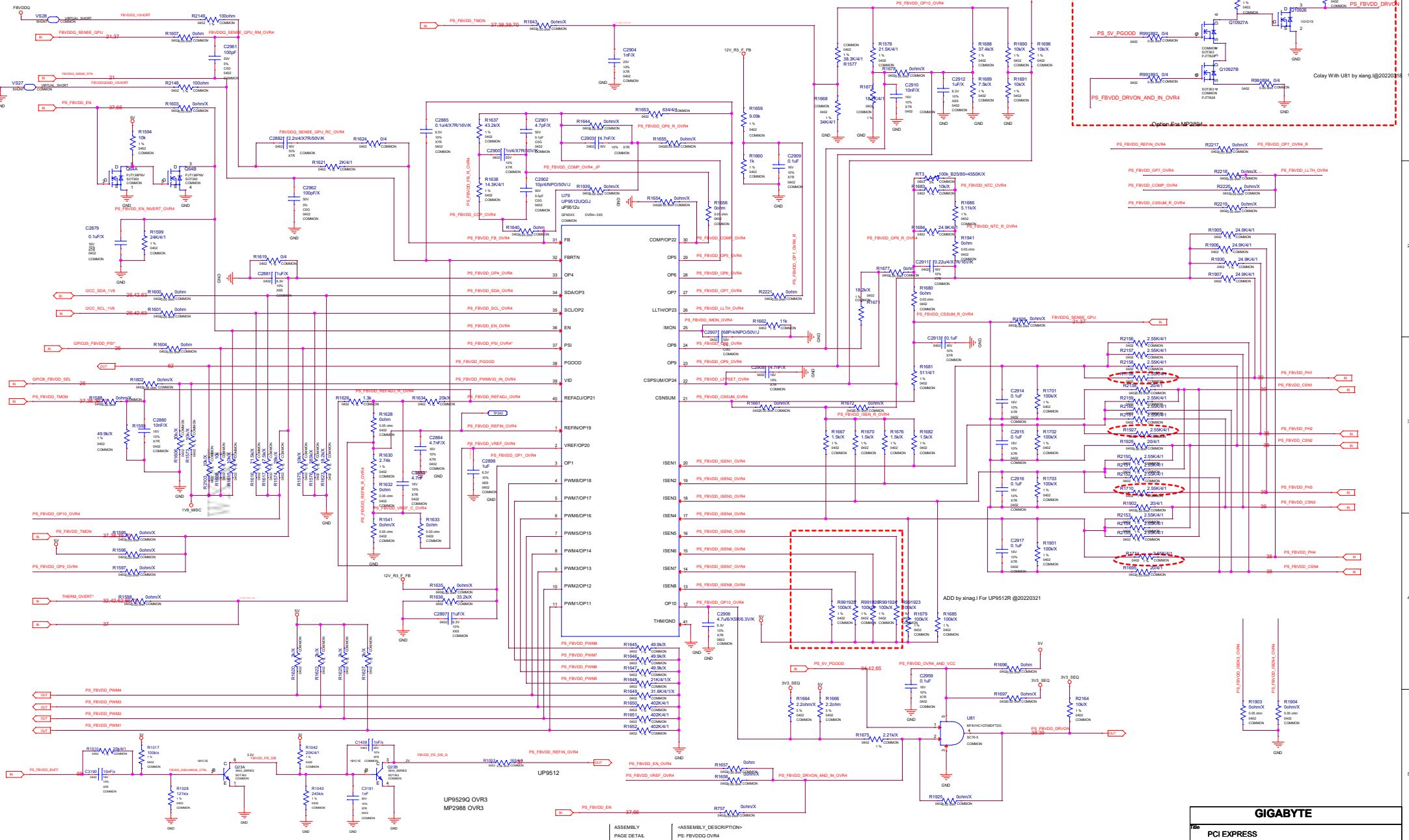
GIGABYTE			
Title PCI EXPRESS			
Size	Document Number	Rev	
Custom	GV-N4090GAMING-24GD	1.0	
Date:	Tuesday, October 11, 2022	Sheet	34 of 72

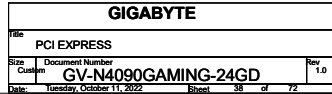
A	B	C	D	E	F	G	H
---	---	---	---	---	---	---	---

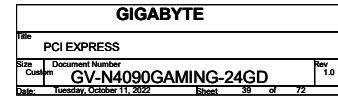

$$V_{out} = (1 + 10K/4.99K) * 0.6V = 1.802V$$


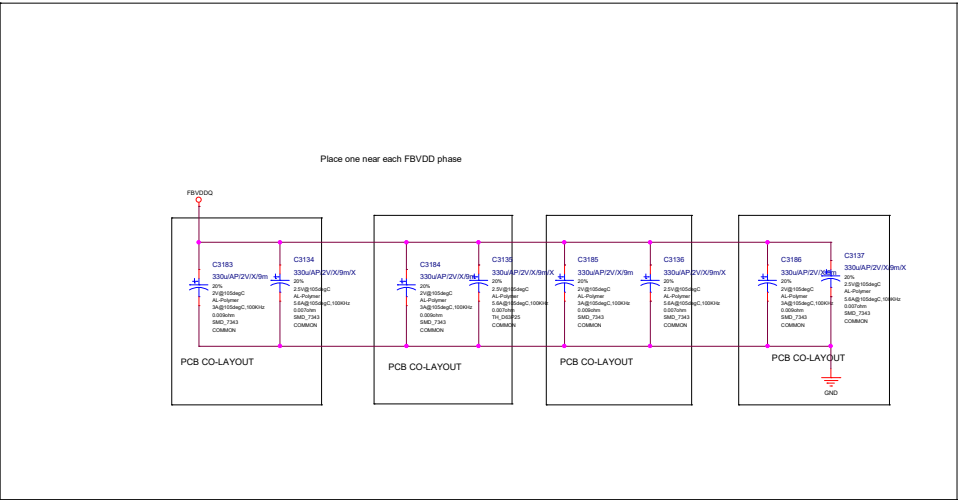
ASSEMBLY	<ASSEMBLY_DESCRIPTION>
PAGE DETAIL	PS: PEX DVD0, GA1V8 NP1V

GIGABYTE			
Title PCI EXPRESS			
Size Custom	Document Number GV-N4090GAMING-24GD		Rev 1.0
Date: Tuesday, October 11, 2022	Sheet 35	of 72	







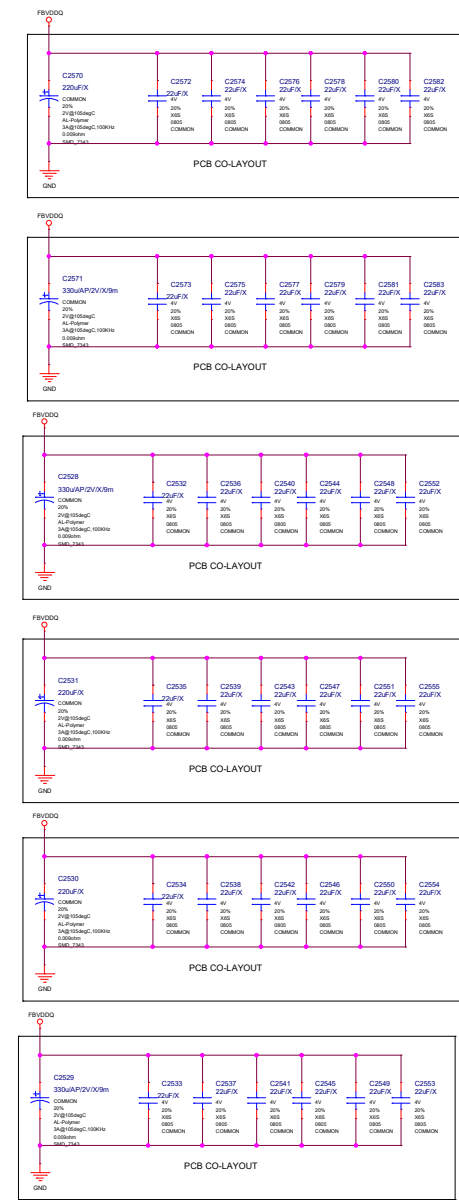


WXKJ

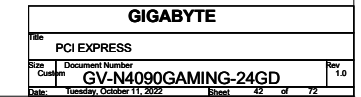
ALL NVIDIA DESIGN SPECIFICATIONS, REFERENCE SPECIFICATIONS, REFERENCE BOARDS, FILES, DRAWINGS, DIAGNOSTICS, LISTS AND OTHER DOCUMENTS OR INFORMATION (TOGETHER AND SEPARATELY, "MATERIALS") ARE BEING PROVIDED "AS IS". THE MATERIALS MAY CONTAIN KNOWN AND UNKNOWN VIOLATIONS OR DEVIATIONS OF INDUSTRY STANDARDS AND SPECIFICATIONS. NVIDIA MAKES NO WARRANTIES, EXPRESSED, IMPLIED, STATUTORY OR OTHERWISE WITH RESPECT TO THE MATERIALS AND EXPRESSLY DISCLAIMS ALL WARRANTIES INCLUDING, WITHOUT LIMITATION, THE WARRANTIES OF DESIGN, OF NONINFRINGEMENT, MERCHANTABILITY OR FITNESS FOR A PARTICULAR PURPOSE, OR ARISING FROM A COURSE OF DEALING, TRADE USAGE, TRADE PRACTICE, OR INDUSTRY STANDARDS.

ASSEMBLY PAGE DETAIL
<ASSEMBLY_DESCRIPTION>
PS: FBVDD OUTPUT CAP NEAR VR

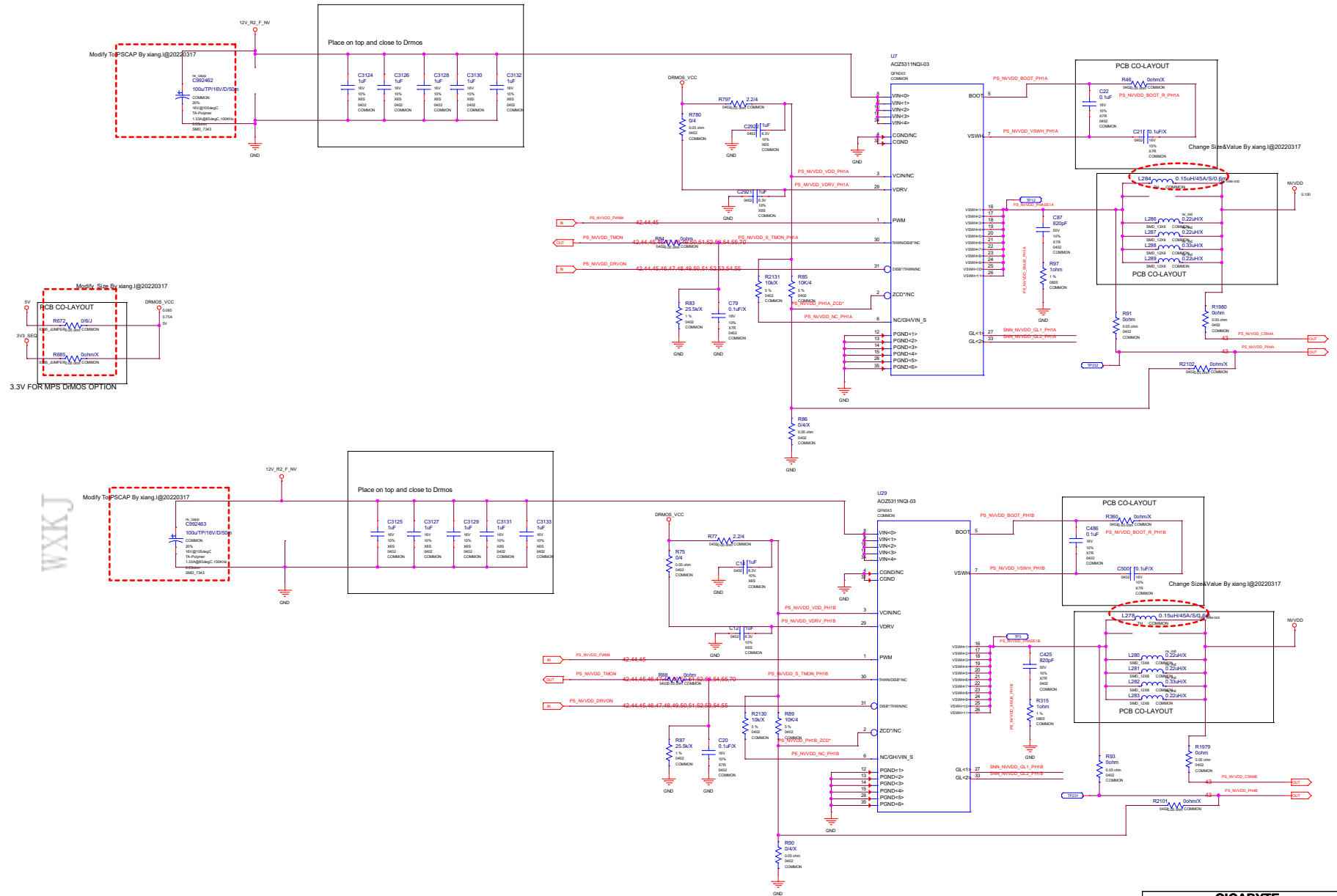
GIGABYTE			
File	PCI EXPRESS		
Size	Customer Number	Rev	
Customer	GV-N4090GAMING-24GD	1.0	
Date:	Tuesday, October 11, 2022	Sheet	40 of 72



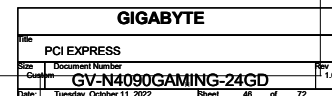
Title			
PCI EXPRESS			
Size	Document Number		Rev
Custom	GV-N4090GAMING-24GD		1.0
Date:	Tuesday, October 11, 2022	Sheet	41 of 72

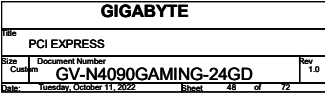


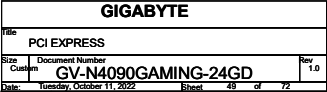


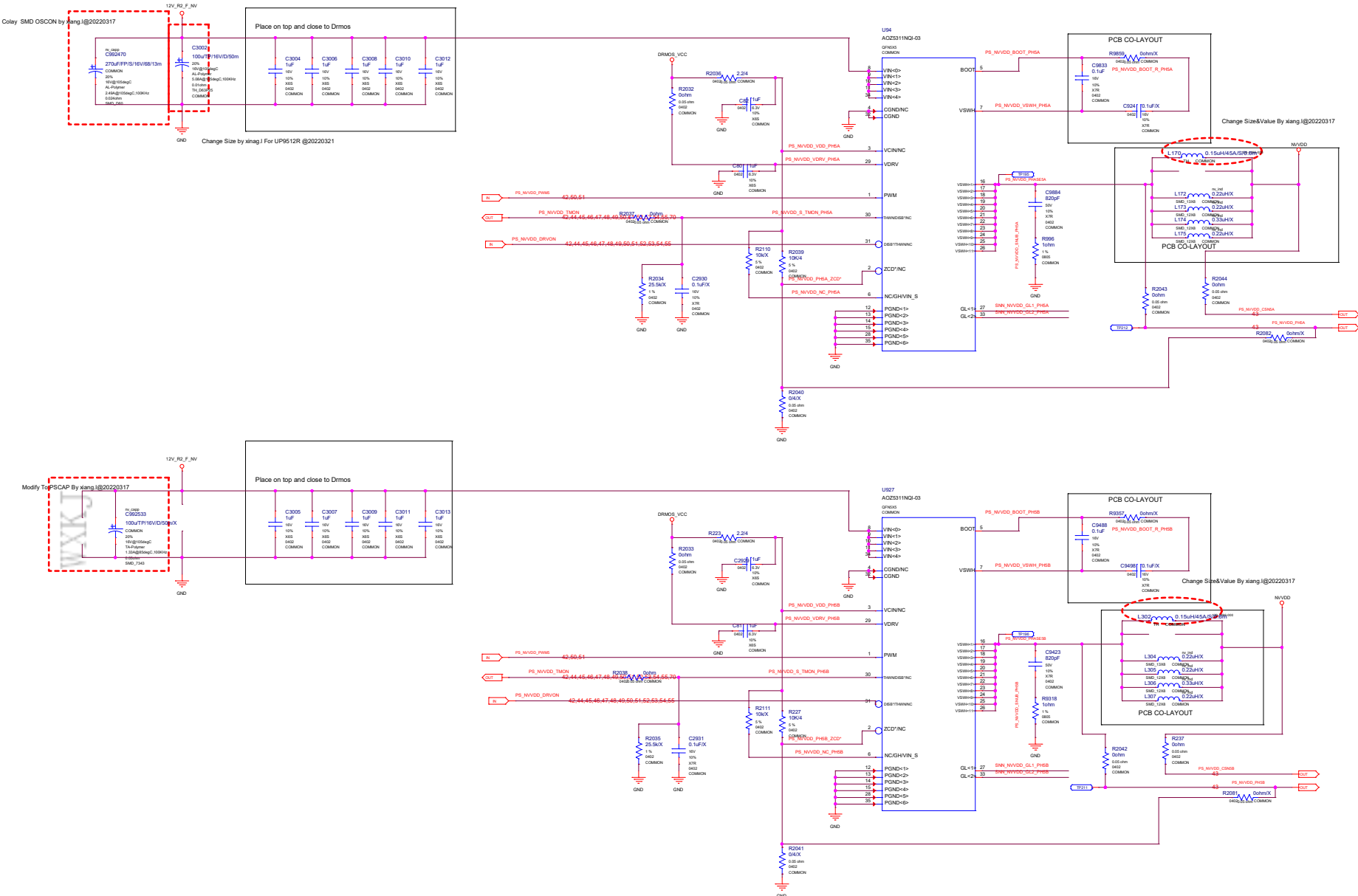


GIGABYTE			
Title PCI EXPRESS			
Size	Document Number	Rev	
Custom	GV-N4090GAMING-24GD	1.0	
Date:	Tuesday, October 11, 2022	Sheet	44 of 72







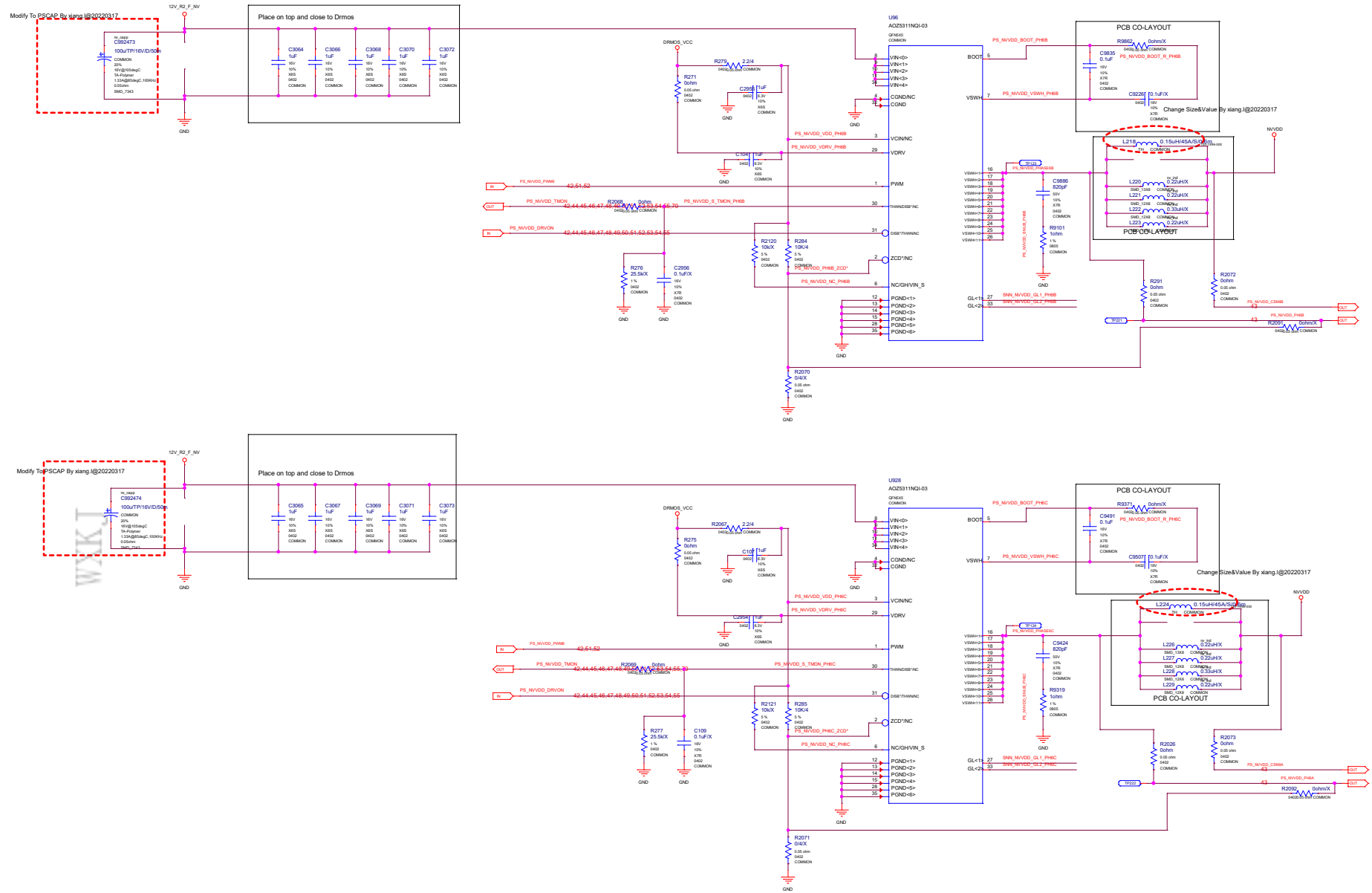


ALL NVIDIA DESIGN SPECIFICATIONS, REFERENCE SPECIFICATIONS, REFERENCE BOARDS, FILES, DRAWINGS, DIAGNOSTICS, LISTS AND OTHER DOCUMENTS (TOGETHER AND SEPARATELY "MATERIALS") ARE PROVIDED "AS IS" THE MATERIALS MAY CONTAIN KNOWN AND UNKNOWN VIOLATIONS OR DEVIATIONS OF INDUSTRY STANDARDS AND SPECIFICATIONS. NVIDIA MAKES NO WARRANTIES, EXPRESSED, IMPLIED, STATUTORY OR OTHERWISE WITH RESPECT TO THE MATERIALS OR OTHERWISE, AND EXPRESSLY DISCLAIMS ALL WARRANTIES INCLUDING, WITHOUT LIMITATION, THE WARRANTIES OF DESIGN, OF NONINFRINGEMENT, MERCHANTABILITY OR FITNESS FOR A PARTICULAR PURPOSE, OR ARISING FROM A COURSE OF DEALING, TRADE USAGE, TRADE PRACTICE, OR INDUSTRY STANDARDS.

ASSEMBLY
PAGE DETAIL

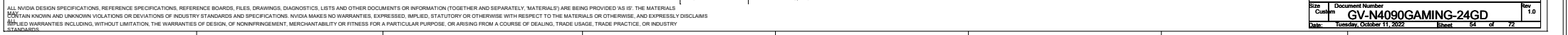
<ASSEMBLY DESCRIPTION>
PS: NVVDD PH5A, PH5B

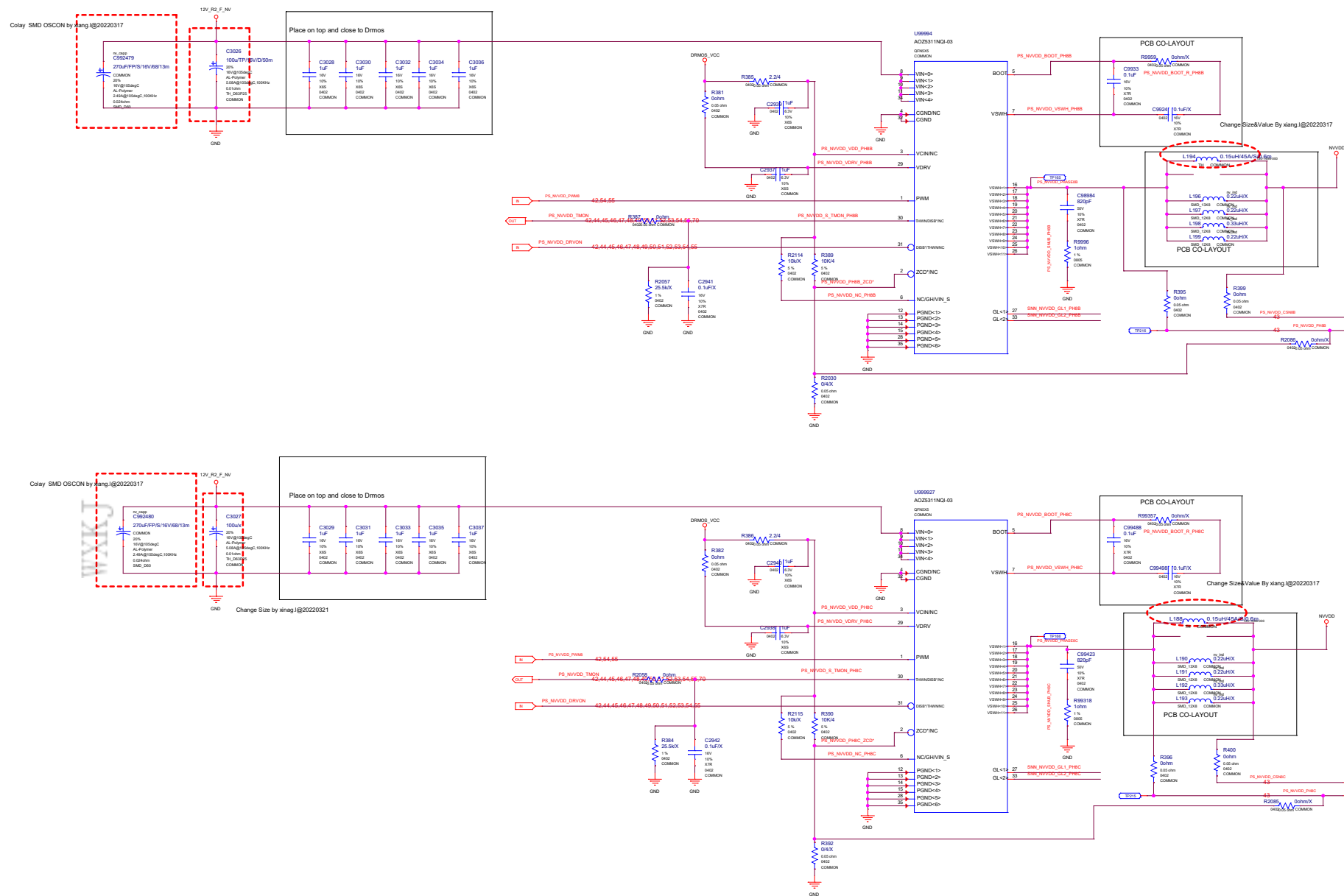
GIGABYTE			
Title PCI EXPRESS			
Size	Document Number		Rev
Custom	GV-N4090GAMING-24GD		1.0
Date:	Tuesday, October 11, 2022	Sheet	50 of 72



GIGABYTE			
PCI EXPRESS			
File	Document Number	Rev	
Size	GV-N4090GAMING-24GD	1.0	
Date	Tuesday, October 11, 2022	Sheet	62 of 72

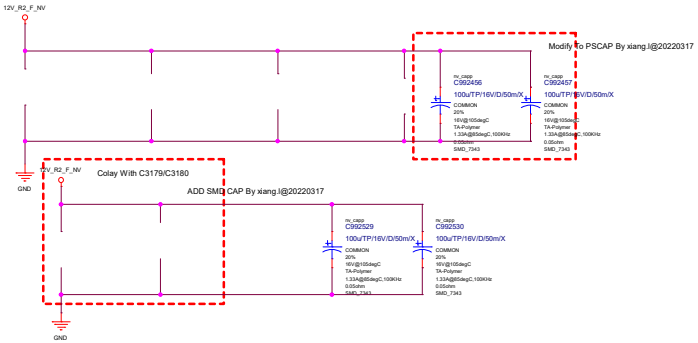
ALL NVIDIA DESIGN SPECIFICATIONS, REFERENCE BOARDS, FILES, DRAWINGS, DIAGNOSTICS, LISTS AND OTHER DOCUMENTS (TOGETHER AND SEPARATELY, "MATERIALS") ARE BEING PROVIDED "AS IS". THE MATERIALS CONTAIN KNOWN AND UNKNOWN VIOLATIONS OR DEVIATIONS OF INDUSTRY STANDARDS AND SPECIFICATIONS. NVIDIA MAKES NO WARRANTIES, EXPRESSED, IMPLIED, STATUTORY OR OTHERWISE WITH RESPECT TO THE MATERIALS OR OTHERWISE, AND EXPRESSLY DISCLAIMS ALL IMPLIED WARRANTIES INCLUDING, WITHOUT LIMITATION, THE WARRANTIES OF DESIGN, OF NON-INFRINGEMENT, MERCHANTABILITY OR FITNESS FOR A PARTICULAR PURPOSE, OR ARISING FROM A COURSE OF DEALING, TRADE USAGE, TRADE PRACTICE, OR INDUSTRY STANDARDS.





GIGABYTE			
Title PCI EXPRESS			
Size	Custom	Document Number GV-N4090GAMING-24GD	Rev 1.0
Date:	Tuesday, October 11, 2022		Sheet 55 of 72

WXKJ



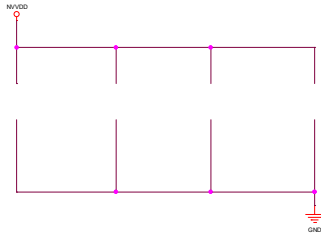
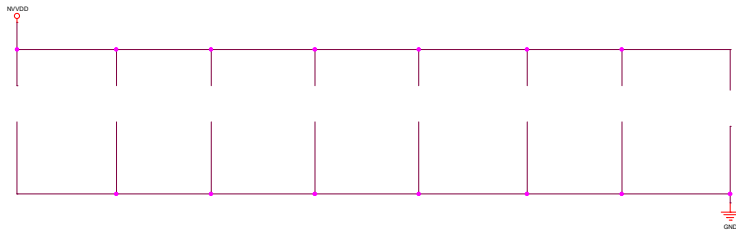
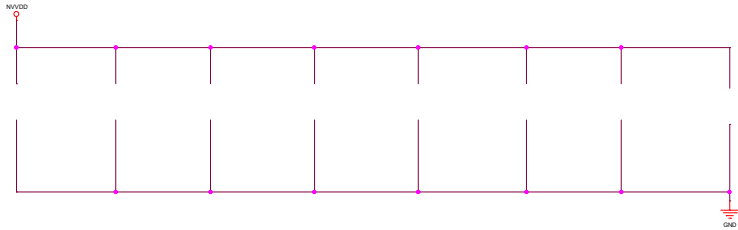
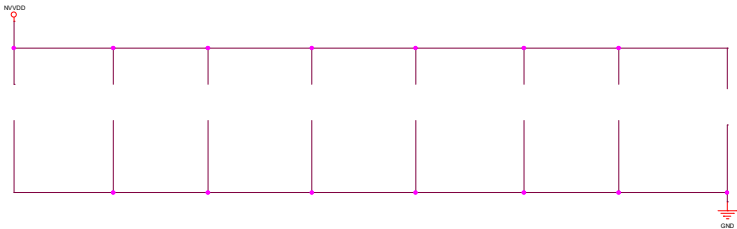
ALL NVIDIA DESIGN SPECIFICATIONS, REFERENCE SPECIFICATIONS, REFERENCE BOARDS, FILES, DRAWINGS, DIAGNOSTICS, LISTS AND OTHER DOCUMENTS OR INFORMATION (TOGETHER AND SEPARATELY, "MATERIALS") ARE BEING PROVIDED "AS IS". THE MATERIALS CONTAIN KNOWN AND UNKNOWN VIOLATIONS OR DEVIATIONS OF INDUSTRY STANDARDS AND SPECIFICATIONS. NVIDIA MAKES NO WARRANTIES, EXPRESSED, IMPLIED, STATUTORY OR OTHERWISE WITH RESPECT TO THE MATERIALS OR OTHERWISE, AND EXPRESSLY DISCLAIMS IMPLIED WARRANTIES INCLUDING, WITHOUT LIMITATION, THE WARRANTIES OF DESIGN, OF NONINFRINGEMENT, MERCHANTABILITY OR FITNESS FOR A PARTICULAR PURPOSE, OR ARISING FROM A COURSE OF DEALING, TRADE USAGE, TRADE PRACTICE, OR INDUSTRY STANDARDS.

ASSEMBLY
PAGE DETAIL

<ASSEMBLY DESCRIPTION>
PS: INPUT CAP

GIGABYTE			
PCI EXPRESS			
Size	Document Number		Rev
Custom	GV-N4090GAMING-24GD		1.0
Date:	Tuesday, October 11, 2022	Sheet	66 of 72

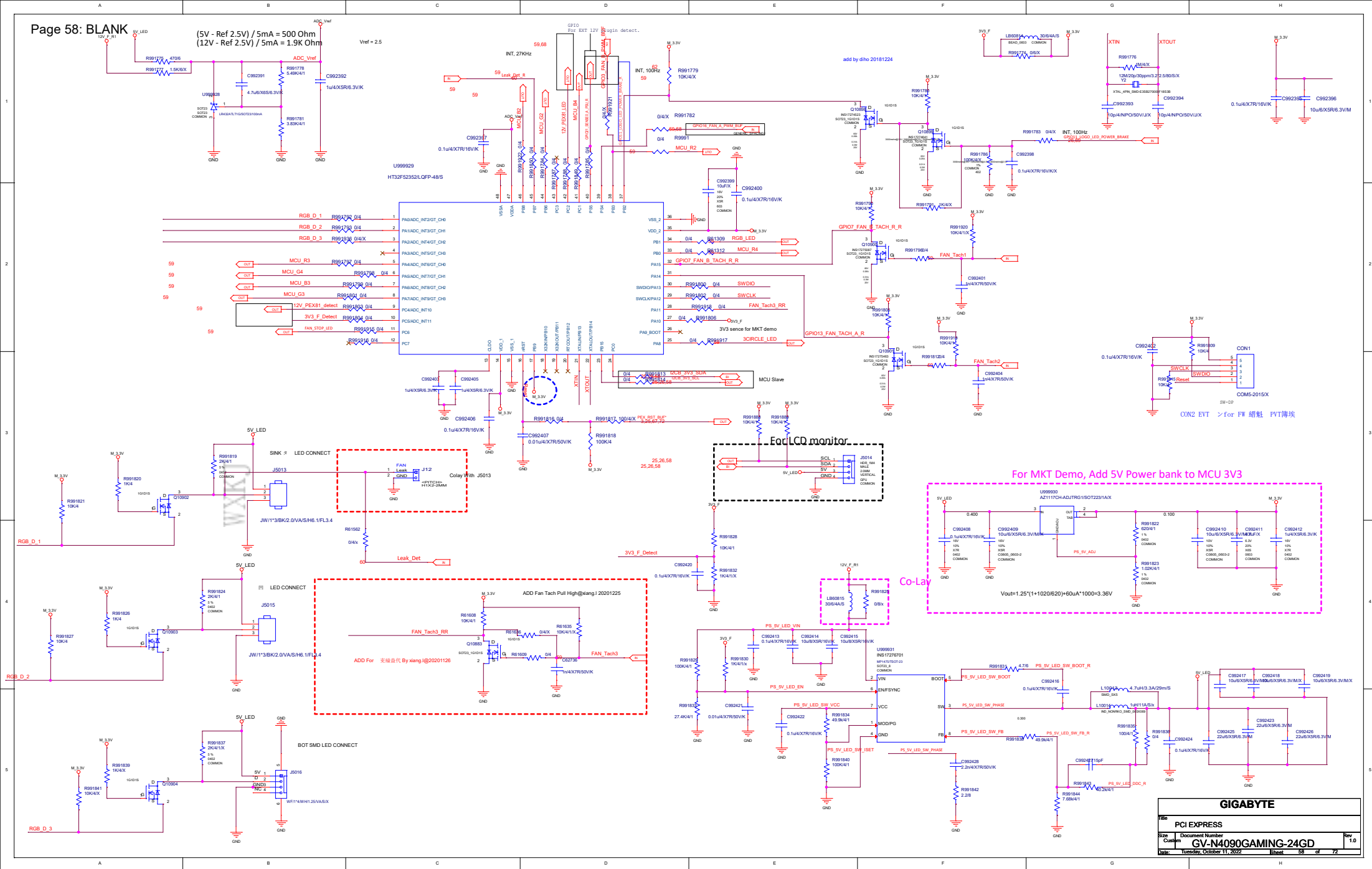
WXKJ

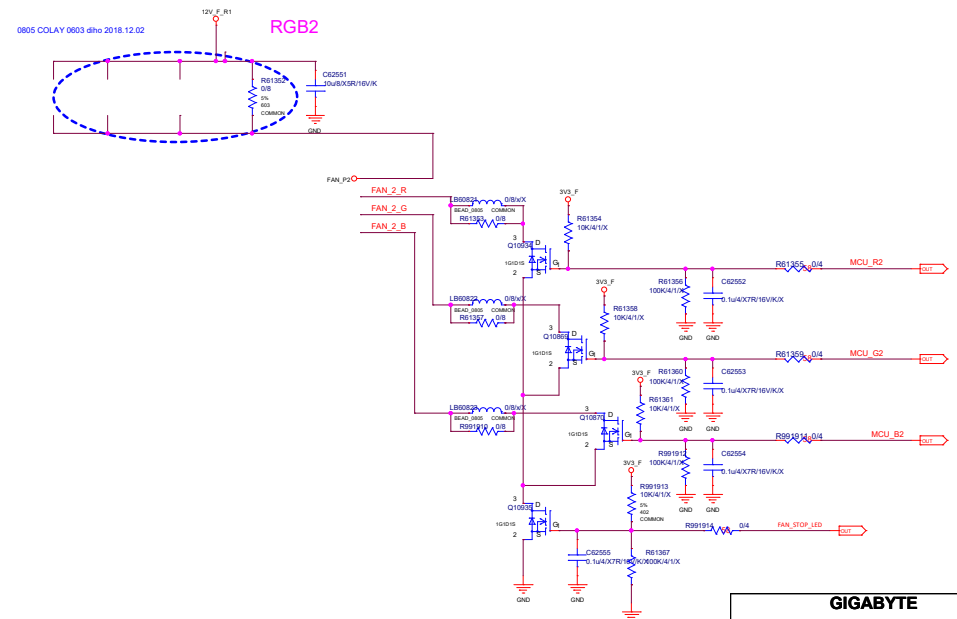
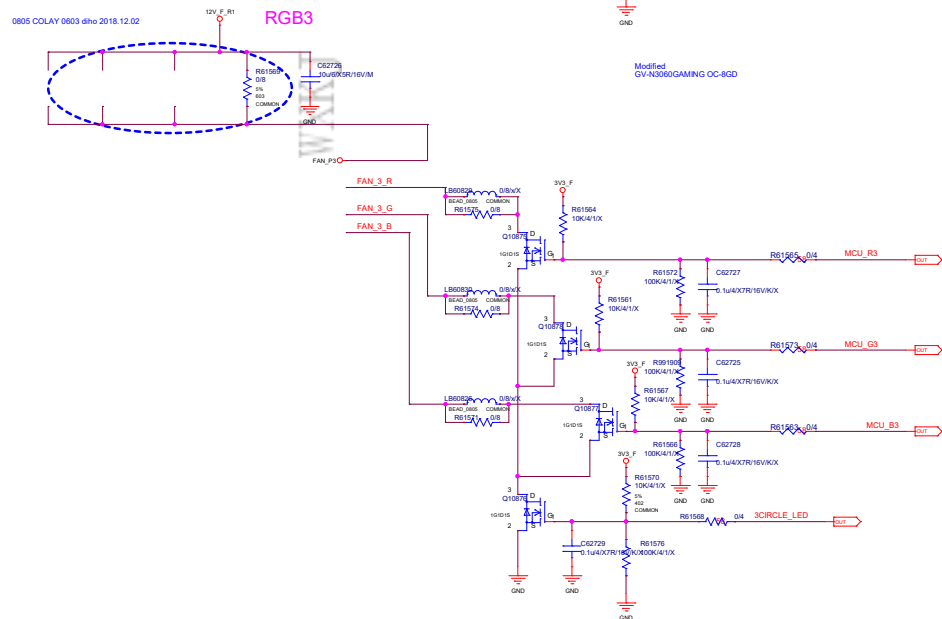
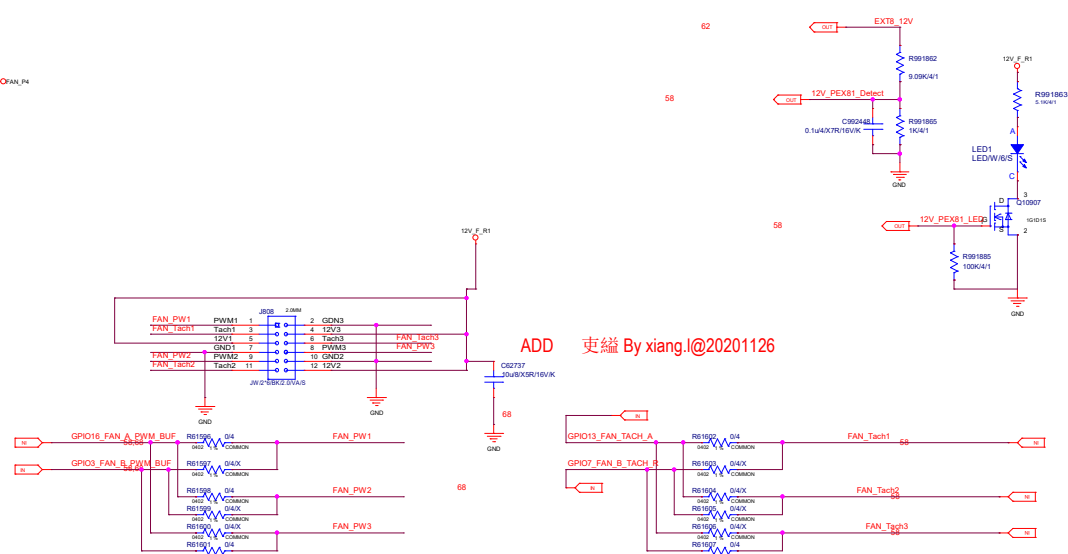
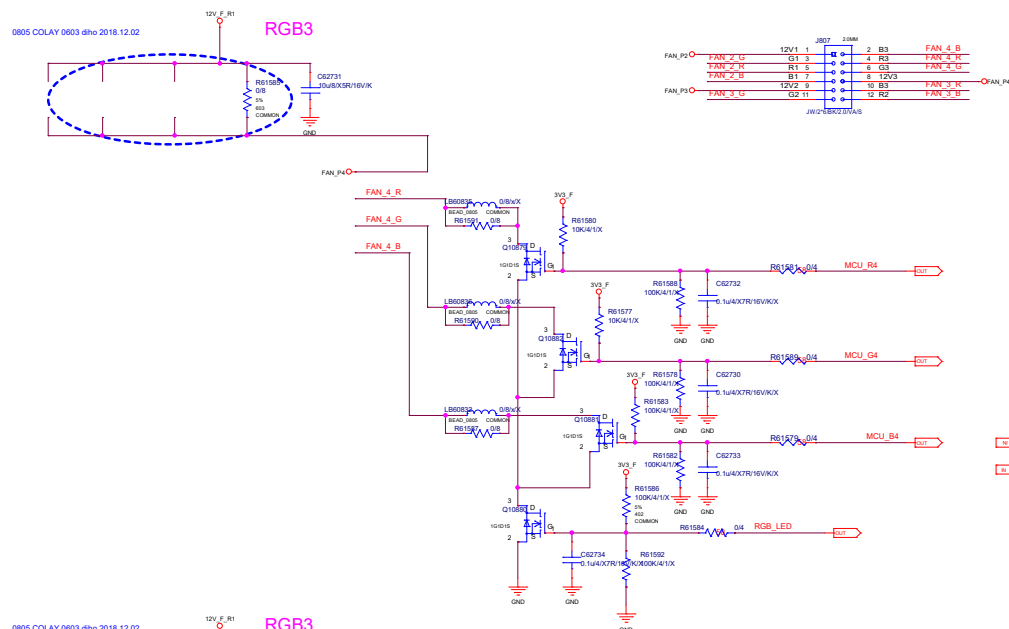


ALL NVIDIA DESIGN SPECIFICATIONS, REFERENCE SPECIFICATIONS, REFERENCE BOARDS, FILES, DRAWINGS, DIAGNOSTICS, LISTS AND OTHER DOCUMENTS OR INFORMATION (TOGETHER AND SEPARATELY, "MATERIALS") ARE BEING PROVIDED "AS IS". THE MATERIALS CONTAIN KNOWN AND UNKNOWN VIOLATIONS OR DEVIATIONS OF INDUSTRY STANDARDS AND SPECIFICATIONS. NVIDIA MAKES NO WARRANTIES, EXPRESSED, IMPLIED, STATUTORY OR OTHERWISE WITH RESPECT TO THE MATERIALS OR OTHERWISE, AND EXPRESSLY DISCLAIMS IMPLIED WARRANTIES INCLUDING, WITHOUT LIMITATION, THE WARRANTIES OF DESIGN, OF NONINFRINGEMENT, MERCHANTABILITY OR FITNESS FOR A PARTICULAR PURPOSE, OR ARISING FROM A COURSE OF DEALING, TRADE USAGE, TRADE PRACTICE, OR INDUSTRY STANDARDS.

ASSEMBLY PAGE DETAIL
<ASSEMBLY DESCRIPTION>
PS: NVVDD OUTPUT CAP

GIGABYTE			
Title PCI EXPRESS			
Size Custom	Document Number GV-N4090GAMING-24GD		Rev 1.0
Date Tuesday, October 11, 2022		Sheet 57	of 72



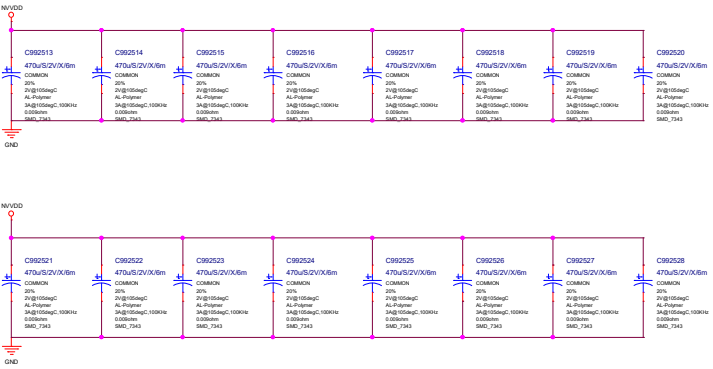
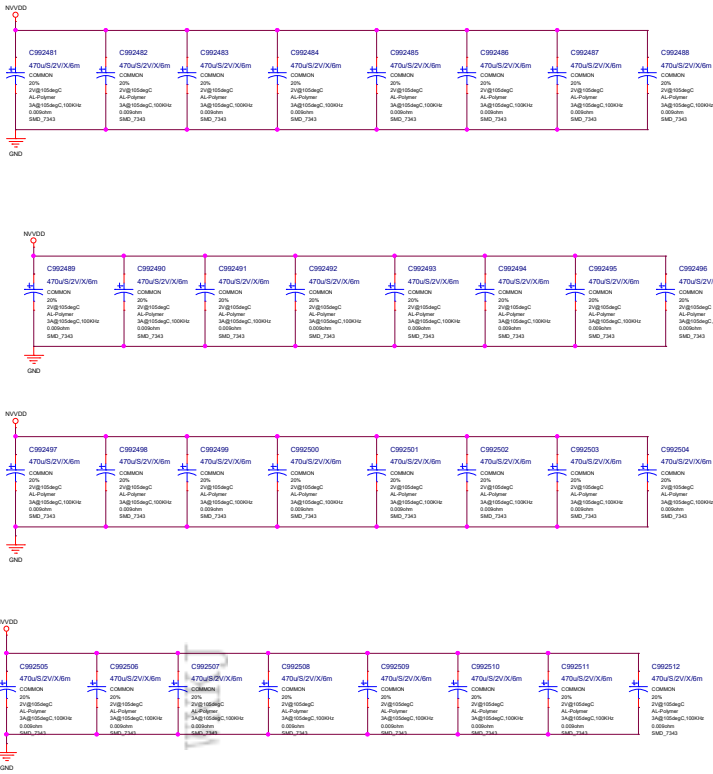


GIGABYTE			
Title PCI EXPRESS			
Size	Document Number		Rev
Custom	GV-N4090GAMING-24GD		1.0
Date:	Tuesday, October 11, 2022	Sheet	59 of 72

ALL NVIDIA DESIGN SPECIFICATIONS, REFERENCE SPECIFICATIONS, REFERENCE BOARDS, FILES, DRAWINGS, DIAGNOSTICS, LISTS AND OTHER DOCUMENTS OR INFORMATION (TOGETHER AND SEPARATELY, "MATERIALS") ARE BEING PROVIDED AS IS. THE MATERIALS
 CONTAINED HEREIN AND UNLESS OTHERWISE STATED, NVIDIA MAKES NO WARRANTIES, EXPRESSED, IMPLIED, STATUTORY OR OTHERWISE WITH RESPECT TO THE MATERIALS OR OTHERWISE, AND EXPRESSLY DISCLAIMS
 ALL WARRANTIES INCLUDING, WITHOUT LIMITATION, THE WARRANTIES OF DESIGN, OF NON-INFRINGEMENT, MERCHANTABILITY OR FITNESS FOR A PARTICULAR PURPOSE, OR ARISING FROM A COURSE OF DEALING, TRADE USAGE, OR INDUSTRY

ASSEMBLY
PAGE DETAIL

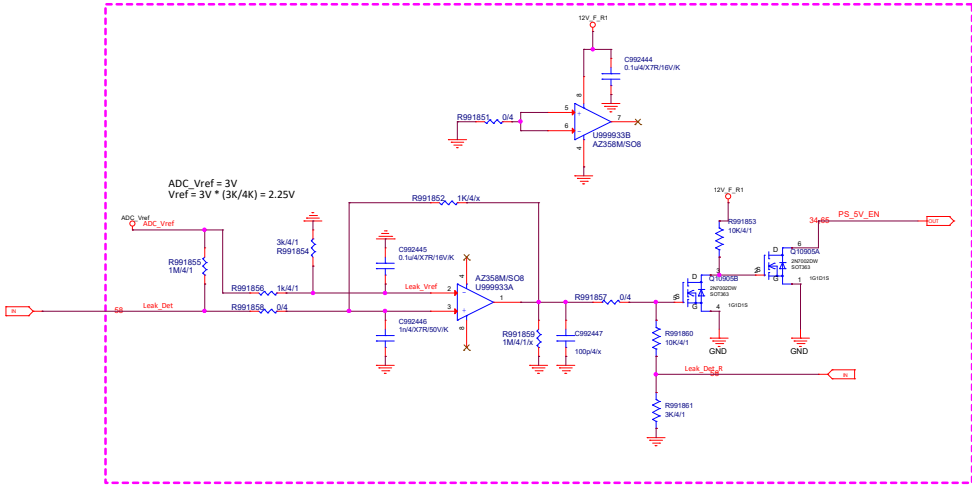
<ASSEMBLY_DESCRIPTION>
BLANK



Chane to PSCAP by xiang li@20220318

0805 COLAY 0603 dho 2018.12.02

For Leak detect

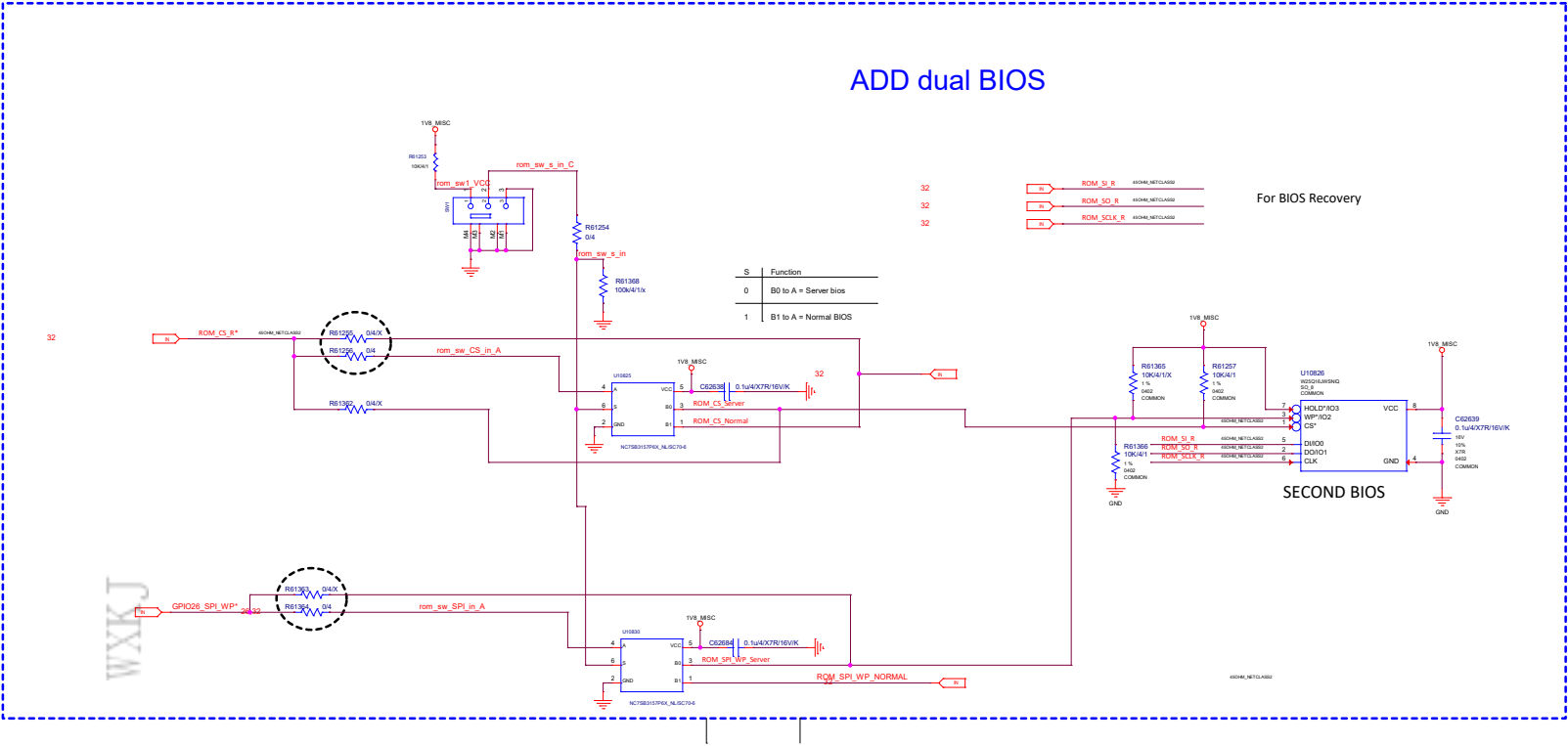


GIGABYTE			
file	PCI EXPRESS		
Size	Document Number	GV-N4090GAMING-24GD	
Copy	Date	Tuesday, October 11, 2022	Sheet 60 of 72

ALL NVIDIA DESIGN SPECIFICATIONS, REFERENCE SPECIFICATIONS, REFERENCE BOARDS, FILES, DRAWINGS, DIAGNOSTICS, LISTS AND OTHER DOCUMENTS OR INFORMATION (TOGETHER AND SEPARATELY, "MATERIALS") ARE BEING PROVIDED "AS IS". THE MATERIALS CONTAIN KNOWN AND UNKNOWN VIOLATIONS OR DEVIATIONS OF INDUSTRY STANDARDS AND SPECIFICATIONS. NVIDIA MAKES NO WARRANTIES, EXPRESSED, IMPLIED, STATUTORY OR OTHERWISE WITH RESPECT TO THE MATERIALS OR OTHERWISE, AND EXPRESSLY DISCLAIMS ALL IMPLIED WARRANTIES INCLUDING, WITHOUT LIMITATION, THE WARRANTIES OF DESIGN, OF NON-INFRINGEMENT, MERCHANTABILITY OR FITNESS FOR A PARTICULAR PURPOSE, OR ARISING FROM A COURSE OF DEALING, TRADE USAGE, TRADE PRACTICE, OR INDUSTRY STANDARDS.

ASSEMBLY
PAGE DETAIL

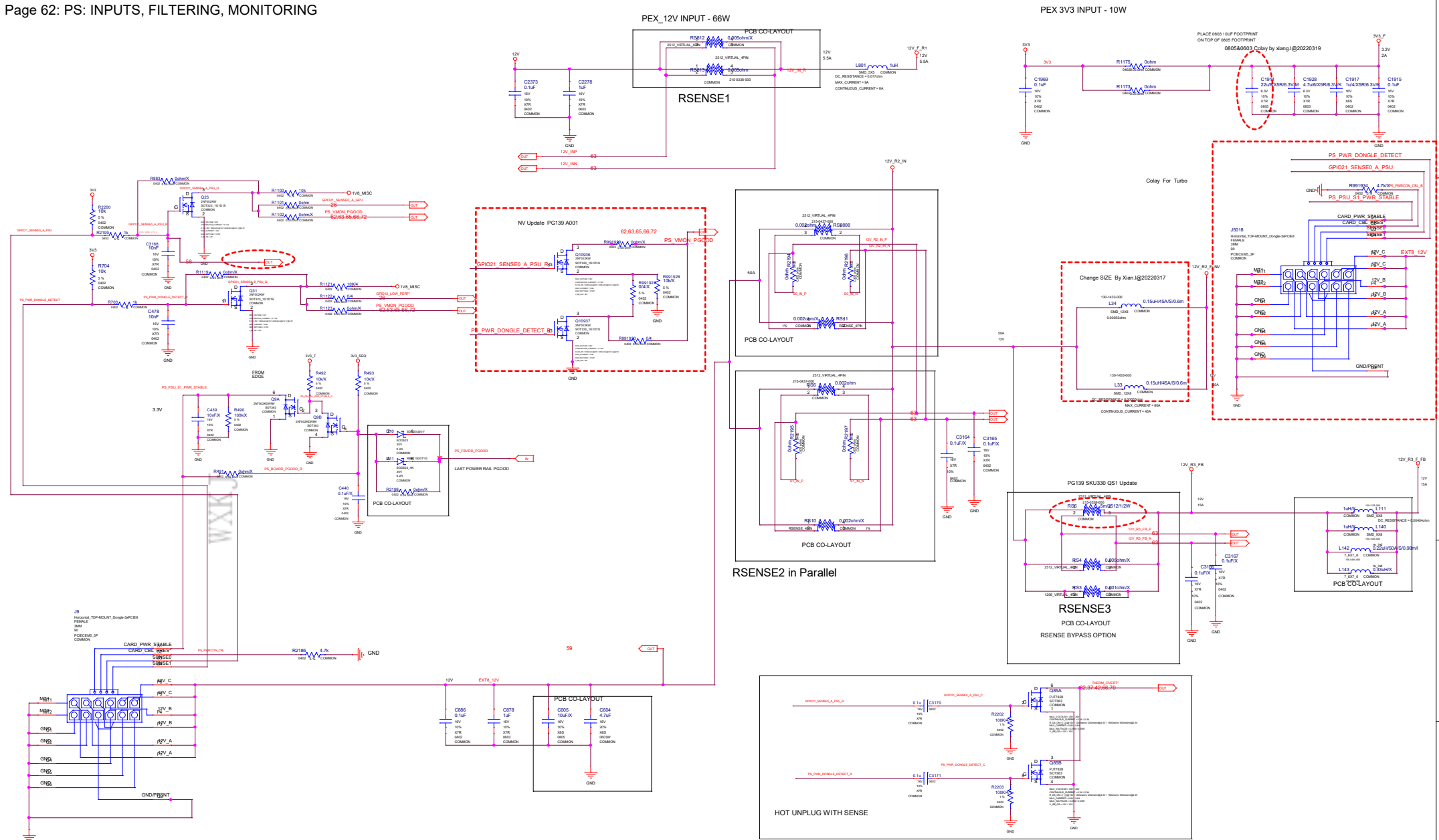
<ASSEMBLY_DESCRIPTION>
BLANK

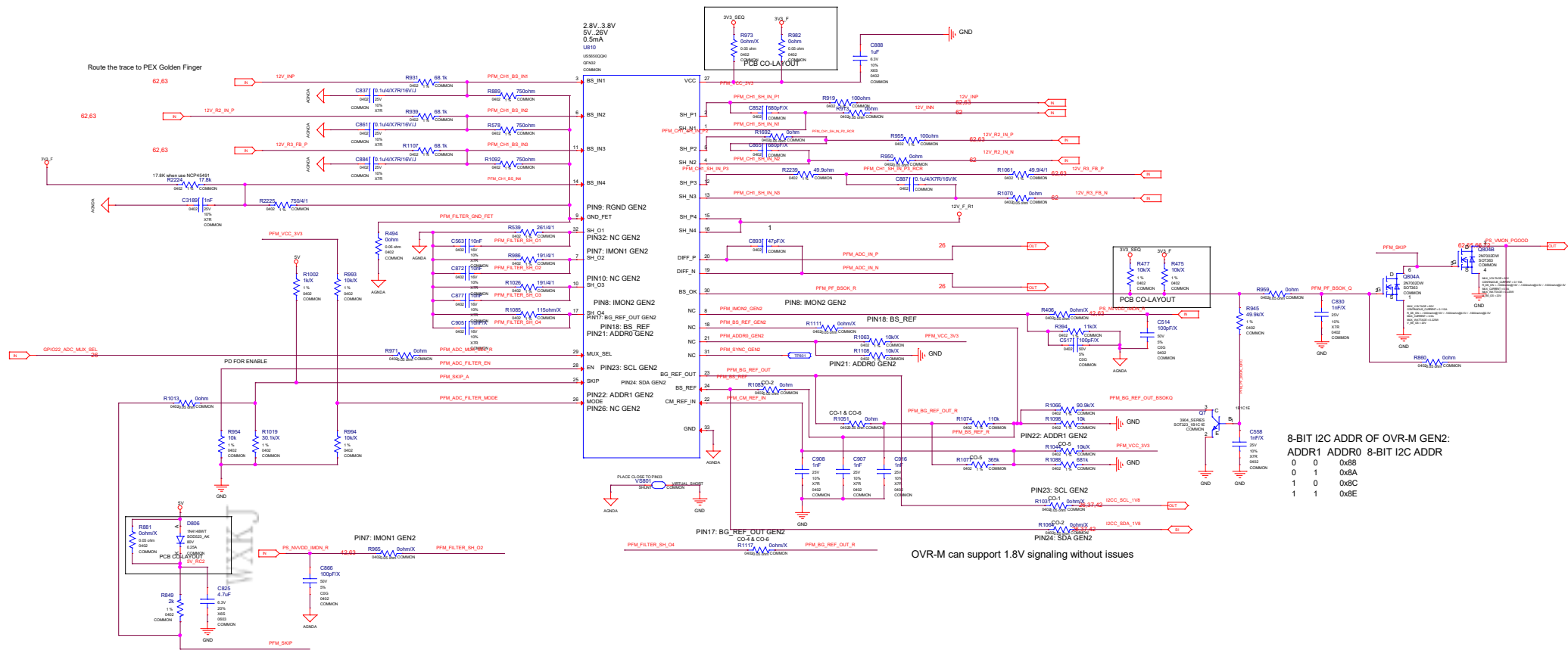


ALL NVIDIA DESIGN SPECIFICATIONS, REFERENCE SPECIFICATIONS, REFERENCE BOARDS, FILES, DRAWINGS, DIAGNOSTICS, LISTS AND OTHER DOCUMENTS OR INFORMATION (TOGETHER AND SEPARATELY, "MATERIALS") ARE BEING PROVIDED "AS IS". THE MATERIALS CONTAIN KNOWN AND UNKNOWN VIOLATIONS OR DEVIATIONS OF INDUSTRY STANDARDS AND SPECIFICATIONS. NVIDIA MAKES NO WARRANTIES, EXPRESSED, IMPLIED, STATUTORY OR OTHERWISE WITH RESPECT TO THE MATERIALS OR OTHERWISE, AND EXPRESSLY DISCLAIMS ALL WARRANTIES INCLUDING, WITHOUT LIMITATION, THE WARRANTIES OF DESIGN, OF NON-INFRINGEMENT, MERCHANTABILITY OR FITNESS FOR A PARTICULAR PURPOSE, OR ARISING FROM A COURSE OF DEALING, TRADE USAGE, TRADE PRACTICE, OR INDUSTRY STANDARDS.

ASSEMBLY PAGE DETAIL
<ASSEMBLY_DESCRIPTION> BLANK

GIGABYTE			
PCI EXPRESS			
Size	Document Number	Rev	
GV-N4090GAMING-24GD		1.0	
Date:	Tuesday, October 11, 2022	Sheet	61 of 72



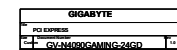
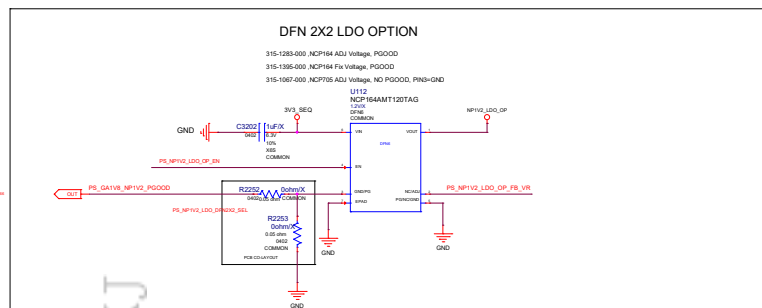


OVR-M GEN2 SUPPORT

OVR-M GEN2:

PIN 7, 8, 9, 10, 17, 18, 21, 22, 23, 24, 26, 32
are different from GEN1 OVRM,

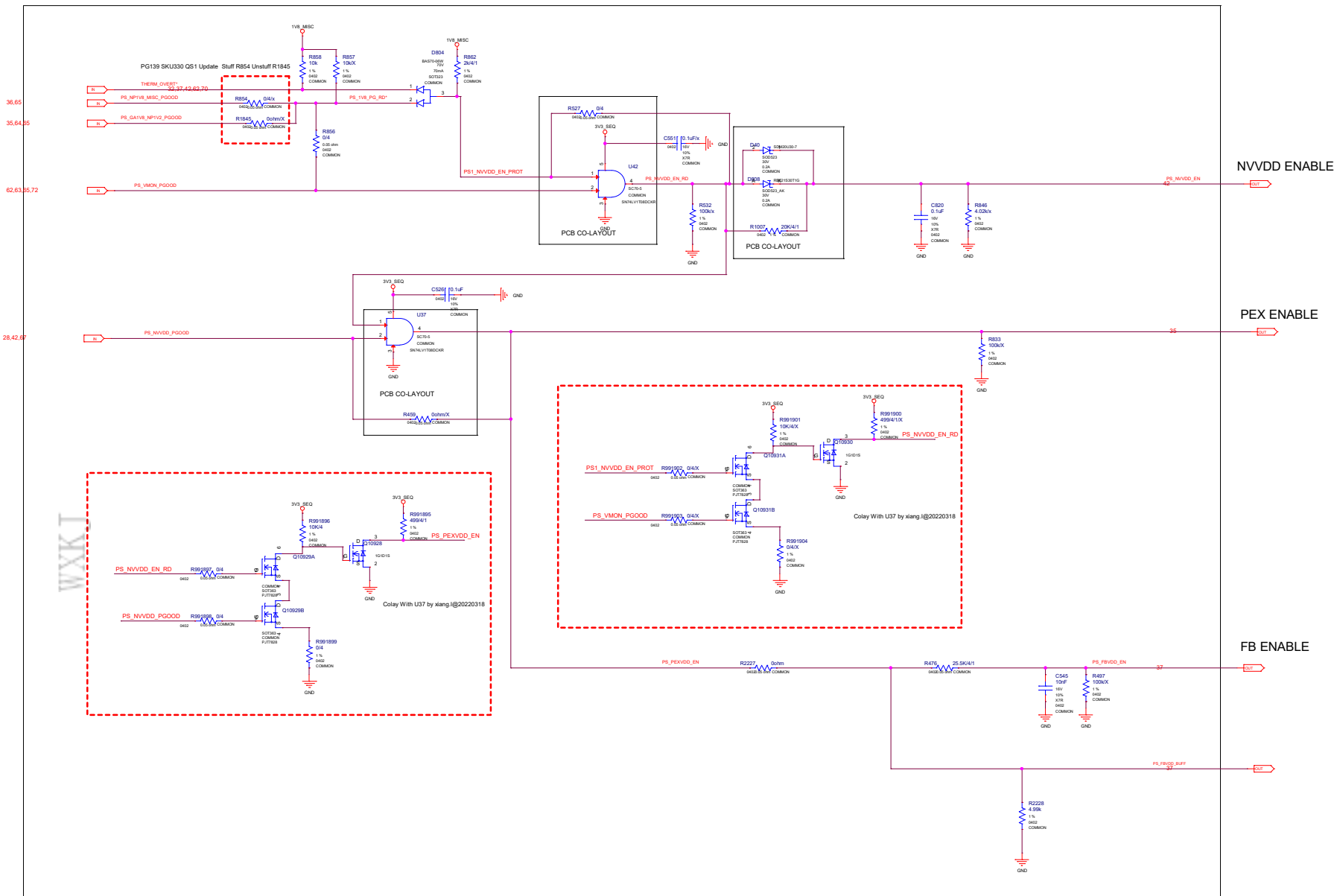
GIGABYTE			
Title PCI EXPRESS			
Size	Document Number		Rev
Custom	GV-N4090GAMING-24GD		1.0
Date:	Tuesday, October 11, 2022	Sheet	63 of 72





ASSEMBLY	<ASSEMBLY_DESCRIPTION>
PAGE DETAIL	SEQ: 5V, GA1V8_NP1V2 EN, 3V3_SEQ, 3V3_PROT

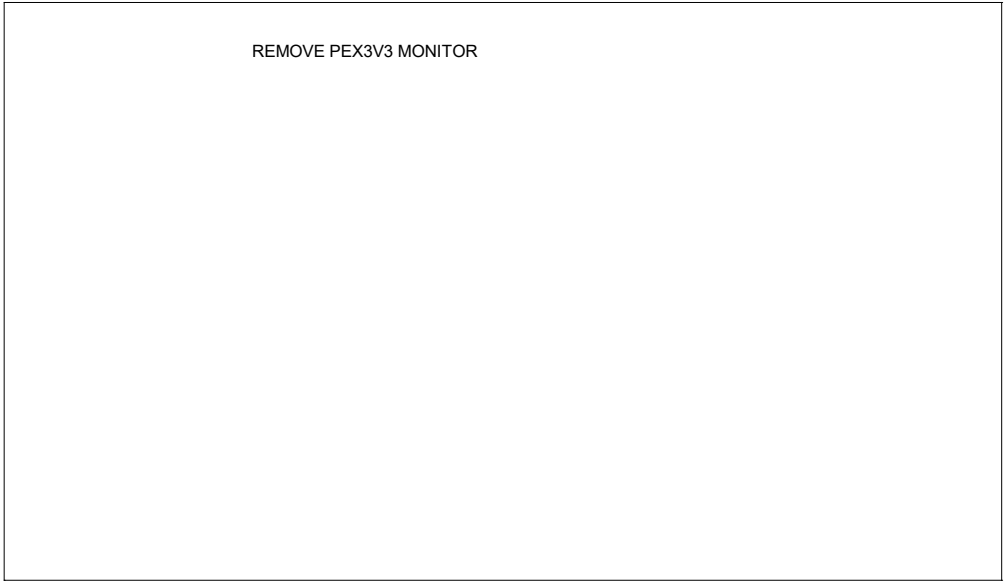
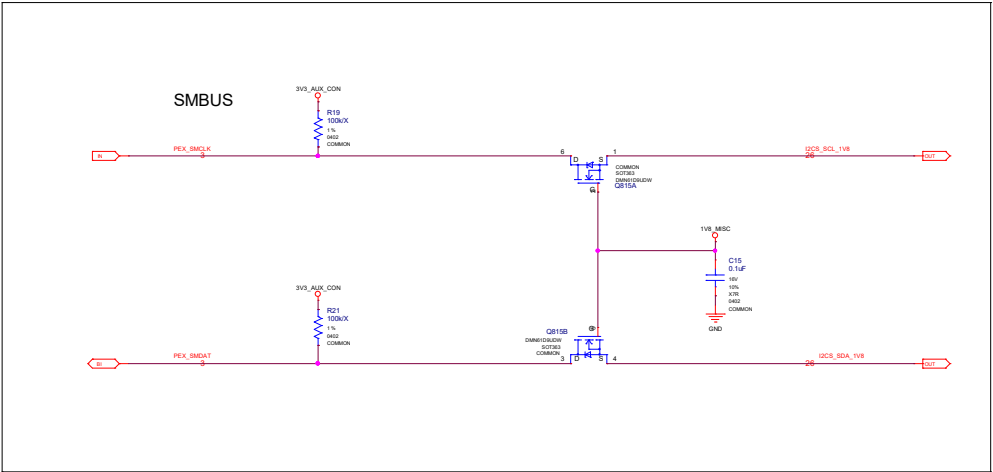
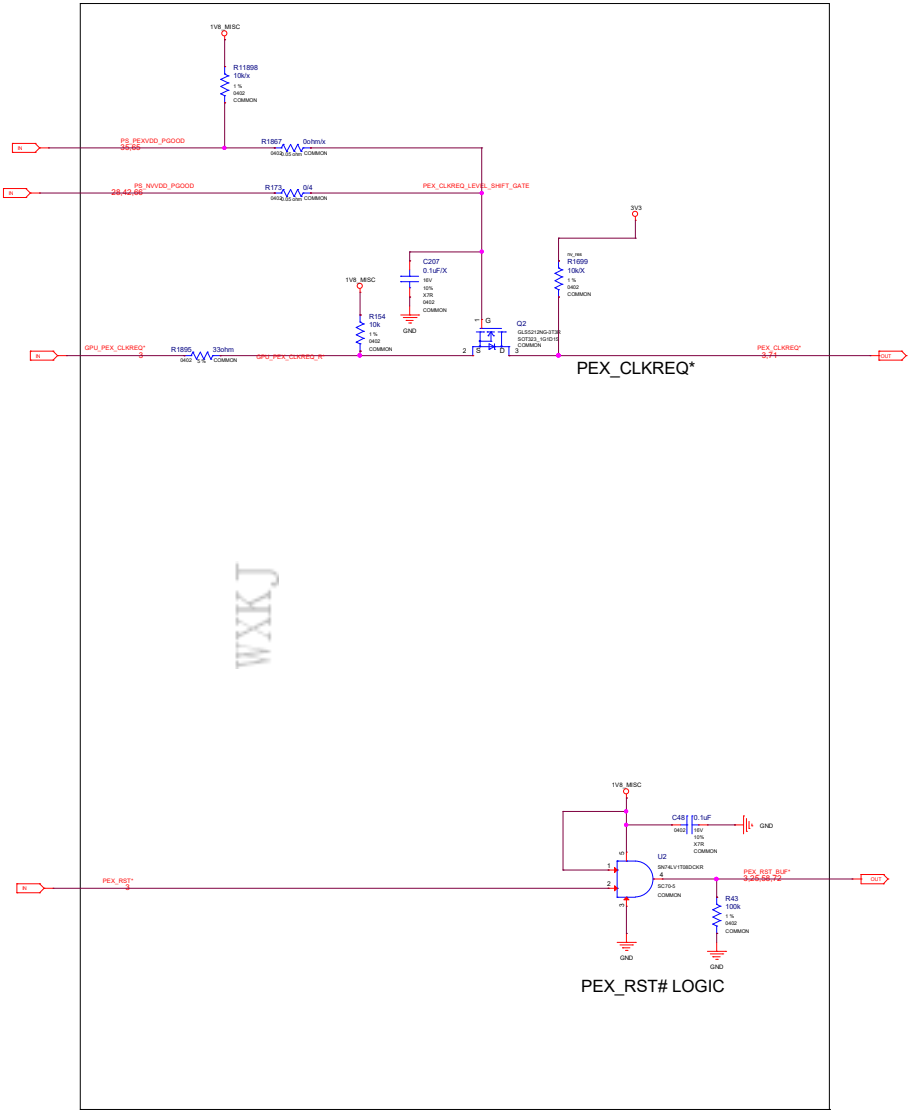
GIGABYTE			
Title PCI EXPRESS			
Size	Document Number		Rev
Custom	GV-N4090GAMING-24GD		1.0
Date:	Tuesday, October 11, 2022	Sheet	85 of 72



ALL NVIDIA DESIGN SPECIFICATIONS, REFERENCE BOARDS, FILES, DRAWINGS, DIAGNOSTICS, LISTS AND OTHER DOCUMENTS (TOGETHER AND SEPARATELY, "MATERIALS") ARE BEING PROVIDED "AS IS". THE MATERIALS CONTAIN KNOWN AND UNKNOWN VIOLATIONS OR DEVIATIONS OF INDUSTRY STANDARDS AND SPECIFICATIONS. NVIDIA MAKES NO WARRANTIES, EXPRESSED, IMPLIED, STATUTORY OR OTHERWISE WITH RESPECT TO THE MATERIALS OR OTHERWISE, AND EXPRESSLY DISCLAIMS ALL WARRANTIES INCLUDING, WITHOUT LIMITATION, THE WARRANTIES OF DESIGN, OF NONINFRINGEMENT, MERCHANTABILITY OR FITNESS FOR A PARTICULAR PURPOSE, OR ARISING FROM A COURSE OF DEALING, TRADE USAGE, TRADE PRACTICE, OR INDUSTRY STANDARDS.

ASSEMBLY PAGE DETAIL
SEQ: NV, PEX, FB EN

GIGABYTE			
File	PCI EXPRESS		
Size	Customer	Document Number	Rev
		GV-N4090GAMING-24GD	1.0
Date	Tuesday, October 11, 2022	Sheet	66 of 72



ALL NVIDIA DESIGN SPECIFICATIONS, REFERENCE SPECIFICATIONS, REFERENCE BOARDS, FILES, DRAWINGS, DIAGNOSTICS, LISTS AND OTHER DOCUMENTS (TOGETHER AND SEPARATELY, "MATERIALS") ARE BEING PROVIDED "AS IS". THE MATERIALS CONTAIN KNOWN AND UNKNOWN VIOLATIONS OR DEVIATIONS OF INDUSTRY STANDARDS AND SPECIFICATIONS. NVIDIA MAKES NO WARRANTIES, EXPRESSED, IMPLIED, STATUTORY OR OTHERWISE WITH RESPECT TO THE MATERIALS AND EXPRESSLY DISCLAIMS ALL WARRANTIES INCLUDING, WITHOUT LIMITATION, THE WARRANTIES OF DESIGN, OF NON-INFRINGEMENT, MERCHANTABILITY OR FITNESS FOR A PARTICULAR PURPOSE, OR ARISING FROM A COURSE OF DEALING, TRADE USAGE, TRADE PRACTICE, OR INDUSTRY STANDARDS.



NORTH LOGO LED (WHITE)

(LED should not blink during boot)



Modify Size By xiang.l@20220317

WKKJ



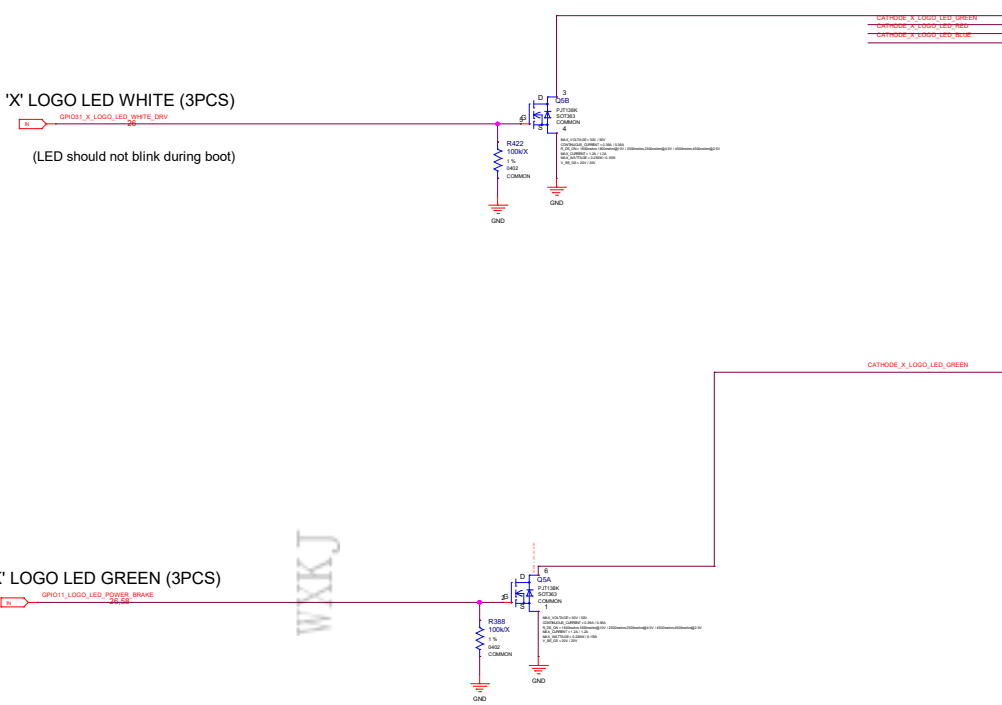
FAN A (RIGHT)

For MKT Demo, add DC Jack.

Title		GIGABYTE	
PCI EXPRESS			
Size	Document Number	Rev	
Custom	GV-N4090GAMING-24GD		
Date:	Tuesday 04/11/2022	Sheet	68 of 72

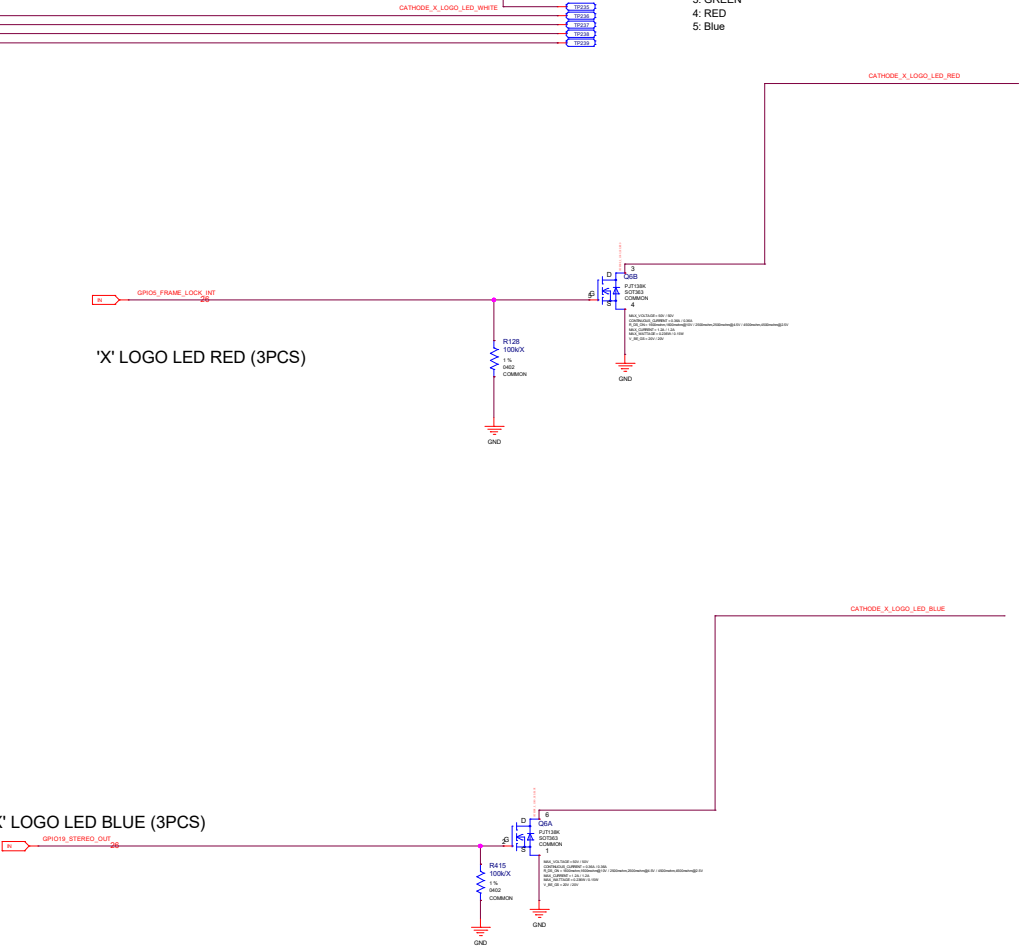
'X' LOGO LED WHITE (3PCS)

(LED should not blink during boot)



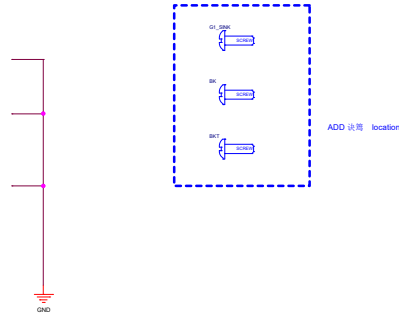
'X' LOGO LED RED (3PCS)

'X' LOGO LED BLUE (3PCS)

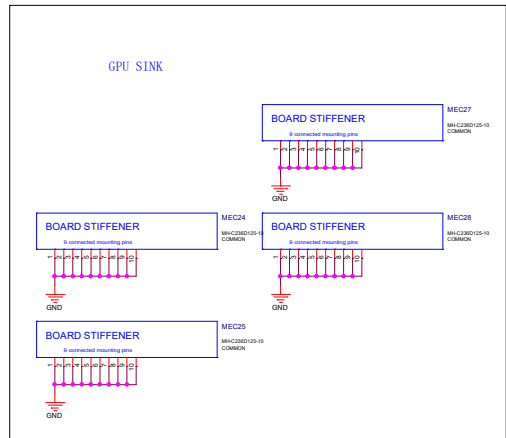
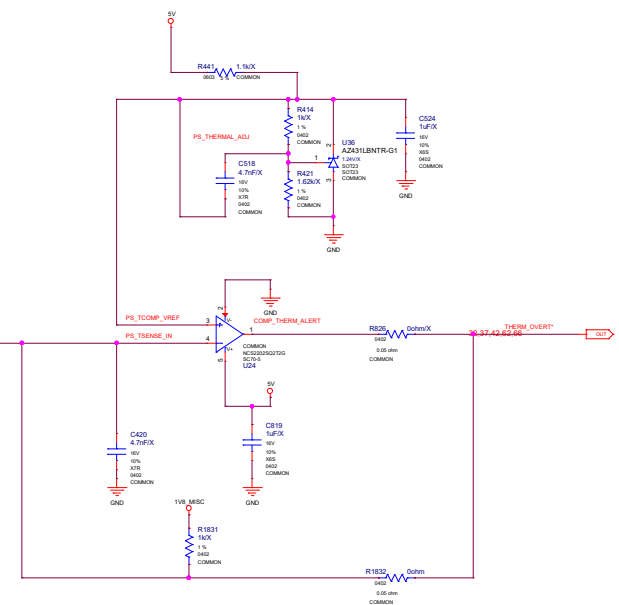
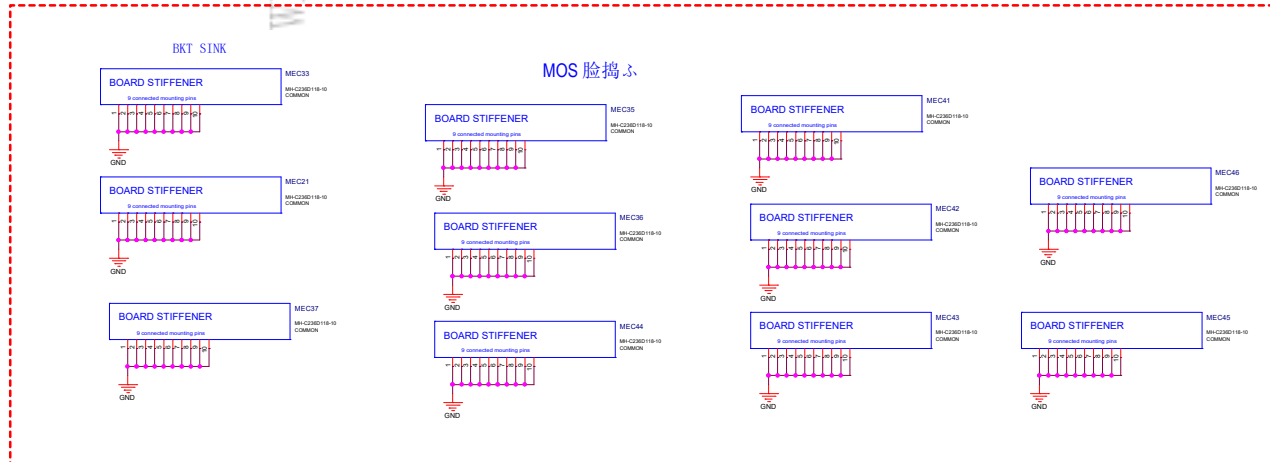
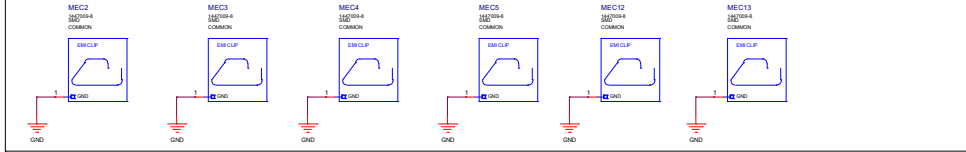


- 1: 12V
- 2: White
- 3: GREEN
- 4: RED
- 5: Blue

ALL NVIDIA DESIGN SPECIFICATIONS, REFERENCE BOARDS, FILES, DRAWINGS, DIAGNOSTICS, LISTS AND OTHER DOCUMENTS (TOGETHER AND SEPARATELY, "MATERIALS") ARE BEING PROVIDED "AS IS". THE MATERIALS CONTAIN KNOWN AND UNKNOWN VIOLATIONS OR DEVIATIONS OF INDUSTRY STANDARDS AND SPECIFICATIONS. NVIDIA MAKES NO WARRANTIES, EXPRESSED, IMPLIED, STATUTORY OR OTHERWISE WITH RESPECT TO THE MATERIALS OR OTHERWISE, AND EXPRESSLY DISCLAIMS ALL IMPLIED WARRANTIES INCLUDING, WITHOUT LIMITATION, THE WARRANTIES OF DESIGN, OF NON-INFRINGEMENT, MERCHANTABILITY OR FITNESS FOR A PARTICULAR PURPOSE, OR ARISING FROM A COURSE OF DEALING, TRADE USAGE, TRADE PRACTICE, OR INDUSTRY STANDARDS.



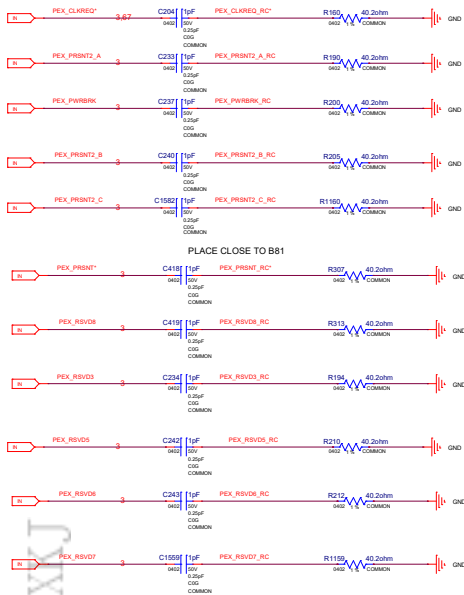
TOP: 6x EMI CLIPS



ALL NVIDIA DESIGN SPECIFICATIONS, REFERENCE SPECIFICATIONS, REFERENCE BOARDS, FILES, DRAWINGS, DIAGNOSTICS, LISTS AND OTHER DOCUMENTS OR INFORMATION (TOGETHER AND SEPARATELY, 'MATERIALS') ARE BEING PROVIDED 'AS IS'. THE MATERIALS CONTAIN KNOWN AND UNKNOWN VIOLATIONS OR DEVIATIONS OF INDUSTRY STANDARDS AND SPECIFICATIONS. NVIDIA MAKES NO WARRANTIES, EXPRESSED, IMPLIED, STATUTORY OR OTHERWISE, WITH RESPECT TO THE MATERIALS OR OTHERWISE, AND EXPRESSLY DISCLAIMS ALL IMPLIED WARRANTIES INCLUDING, WITHOUT LIMITATION, THE WARRANTIES OF DESIGN, OF NON-INFRINGEMENT, MERCHANTABILITY OR FITNESS FOR A PARTICULAR PURPOSE, OR ARISING FROM A COURSE OF DEALING, TRADE USAGE, TRADE PRACTICE, OR INDUSTRY STANDARDS.

ASSEMBLY
PAGE DETAIL
<ASSEMBLY DESCRIPTION>
MECH & VR THERMAL PROTECTION

GIGABYTE			
PCI EXPRESS			
Size	Document Number	Rev	
GV-N4090GAMING-24GD		1.0	
Date	Tuesday, October 11, 2022	Sheet	70 of 72



ALL NVIDIA DESIGN SPECIFICATIONS, REFERENCE SPECIFICATIONS, REFERENCE BOARDS, FILES, DRAWINGS, DIAGNOSTICS, LISTS AND OTHER DOCUMENTS (TOGETHER AND SEPARATELY, "MATERIALS") ARE BEING PROVIDED "AS IS". THE MATERIALS MAY CONTAIN KNOWN AND UNKNOWN VIOLATIONS OR DEVIATIONS OF INDUSTRY STANDARDS AND SPECIFICATIONS. NVIDIA MAKES NO WARRANTIES, EXPRESSED, IMPLIED, STATUTORY OR OTHERWISE WITH RESPECT TO THE MATERIALS AND EXPRESSLY DISCLAIMS ALL WARRANTIES INCLUDING, WITHOUT LIMITATION, THE WARRANTIES OF DESIGN, OF NONINFRINGEMENT, MERCHANTABILITY OR FITNESS FOR A PARTICULAR PURPOSE, OR ARISING FROM A COURSE OF DEALING, TRADE USAGE, TRADE PRACTICE, OR INDUSTRY STANDARDS.

ASSEMBLY
PAGE DETAIL

<ASSEMBLY_DESCRIPTION>
PCI TERM

GIGABYTE			
File	PCI EXPRESS		
Size	Document Number	Rev	1.0
Customer	GV-N4090GAMING-24GD		
Date	Tuesday, October 11, 2022	Sheet	71 of 72

